

The Chesterfield  
**College Group**

2021 - 2022  
**COURSE  
GUIDE**

.....

FULL-TIME  
UNIVERSITY LEVEL  
APPRENTICESHIPS



# WELCOME TO CHESTERFIELD COLLEGE



Thank you for taking the time to explore what Chesterfield College has to offer. The range of learning programmes available are numerous and are designed to help you shape your future career plans. Whether you're starting at entry level, want to become an apprentice or wish to study as an adult on one of our degree-level programmes, our role is to help you develop the skills and knowledge you need to fulfil your ambitions.

We work closely with employers to ensure our learning programmes are closely aligned with the world of work. Many of our tutors have worked in industry and, without exception, are experts in their field. The investment in our facilities and equipment replicates current industry practice, providing students and apprentices with the hands-on experience they need for a successful career.

Our careers team will advise you on which programme of learning is best suited to the career you wish to pursue, or help you find an apprenticeship with one of the 2,000 employers we support. Our work experience team will provide you with an industry placement, where you will work alongside reputable employers to develop technical skills and enhance your employability. At college you can join the Students' Union and access a wide range of activities to enjoy alongside your studies.\* We also provide a number of support services to aid and improve your health and wellbeing during your time here.

I hope the case studies in this guide inspire you, and you find a study programme or apprenticeship which matches your preferred method of learning. I look forward to welcoming you to the college in September as you start the next stage of your journey.

*\*Subject to government guidelines regarding social distancing.*

*Julie*

Julie Richards  
Principal and Chief Executive  
The Chesterfield College Group

# CONTENTS

**06** WHY CHOOSE CHESTERFIELD COLLEGE?

**08** GETTING TO COLLEGE

**10** STUDYING AT COLLEGE

**12** YOUR STUDY PROGRAMME

**14** LEVELS EXPLAINED

**16** PATHWAY OPTIONS

**17** ENGAGE APP

**18** FACILITIES AT COLLEGE

**20** STUDENT WELLBEING HUB

**21** CAREERS AND EMPLOYMENT HUB

**22** COURSES FOR ADULTS

**24** UNIVERSITY-LEVEL STUDY

**26** FEES & FUNDING

**28** FINANCIAL SUPPORT & BURSARIES

**30** LET'S BE FRIENDS

**32** HOW TO APPLY

**34** STUDY PROGRAMMES



**WEDNESDAY 25 NOVEMBER 2020**  
(VIRTUAL) 5-7PM

**WEDNESDAY 27 JANUARY 2021**  
5-7PM

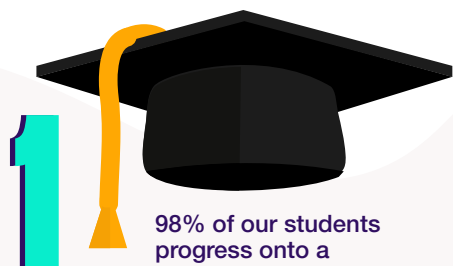
**WEDNESDAY 17 MARCH 2021**  
5-7PM

**WEDNESDAY 1 SEPTEMBER 2021**  
(LATE APPLICANTS) 4.30-7PM

Take a look around our campus, chat to tutors and apply for courses including A Levels, vocational qualifications, apprenticeships and university-level study.

Please note: Dates and times may be subject to change depending on government guidelines relating to the coronavirus pandemic. For the most up-to-date information visit [www.chesterfield.ac.uk/events](http://www.chesterfield.ac.uk/events)

# 10 REASONS TO CHOOSE CHESTERFIELD COLLEGE



1

98% of our students progress onto a positive destination (employment or further study).

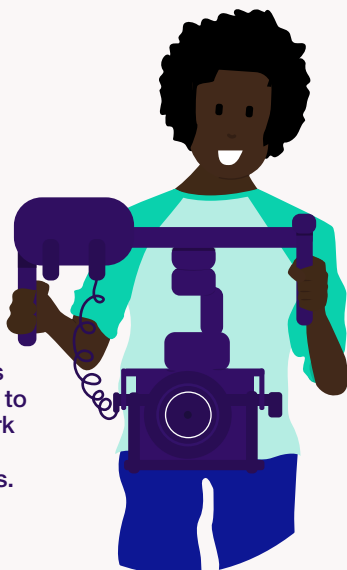


2

We have strong links with employers (around 2,000 employer partners).

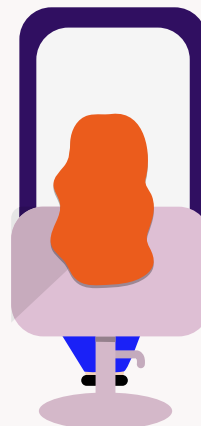
3

Our students have access to amazing work experience opportunities.



4

Our students go on globetrotting adventures.



5

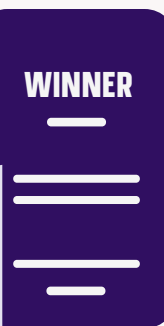
Our campus is filled with industry-standard facilities and workshops.



6

We offer fantastic support services.

7



Our students win awards for the work they produce.

9

Our tutors are experts in their field.



8

We invite inspirational guest speakers into the college.

10



Our students can take part in fun activities, sporting events and join the Students' Union.

# GETTING TO COLLEGE

As our name suggests, we are based right in the centre of Chesterfield. With our large campus and tall south block tower, it's hard to miss us.

Whether you live just around the corner or a little further away, there are plenty of ways to get to college.

## BUS

There are a number of public transport companies which have buses running directly into the town centre, which is just a short walk from college.

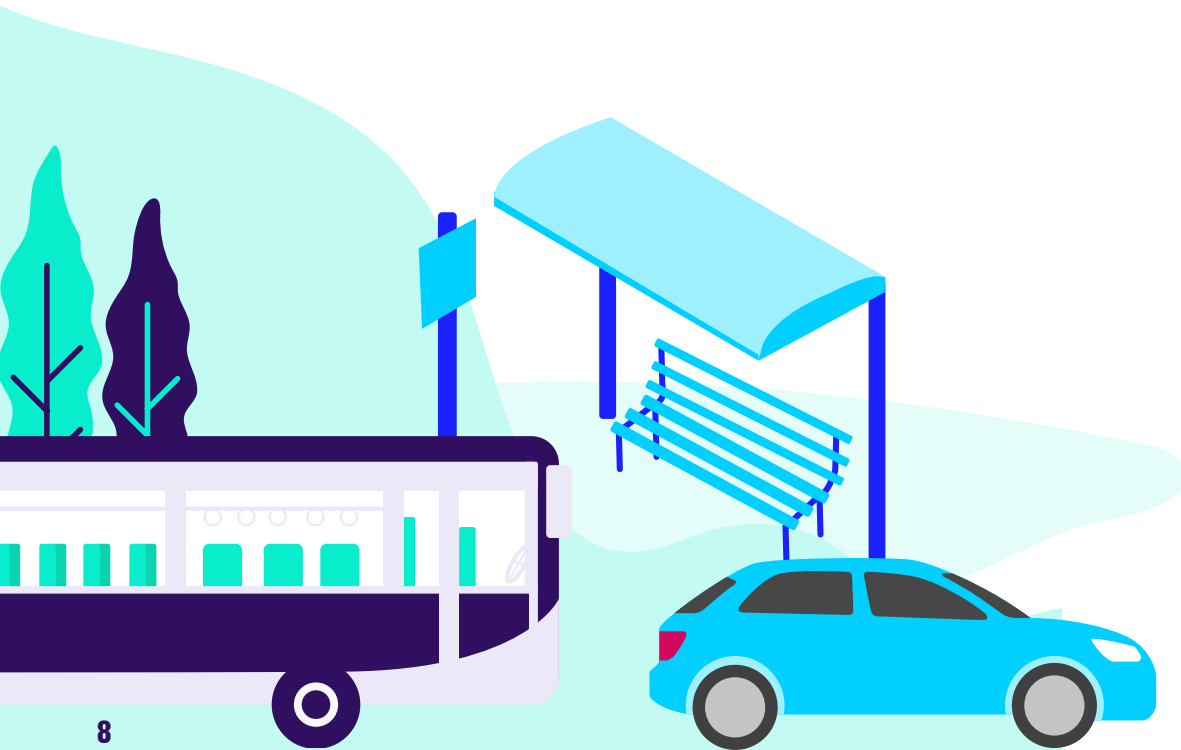
**Students who are eligible for a bursary may get support with travel costs. For more information about subsidised travel and our bus pass visit [www.chesterfield.ac.uk/bus-pass](http://www.chesterfield.ac.uk/bus-pass)**

## TRAIN

Our campus is just around the corner from Chesterfield Train Station. You can catch regular trains from Sheffield, Derby, Nottingham and surrounding areas.

## CAR

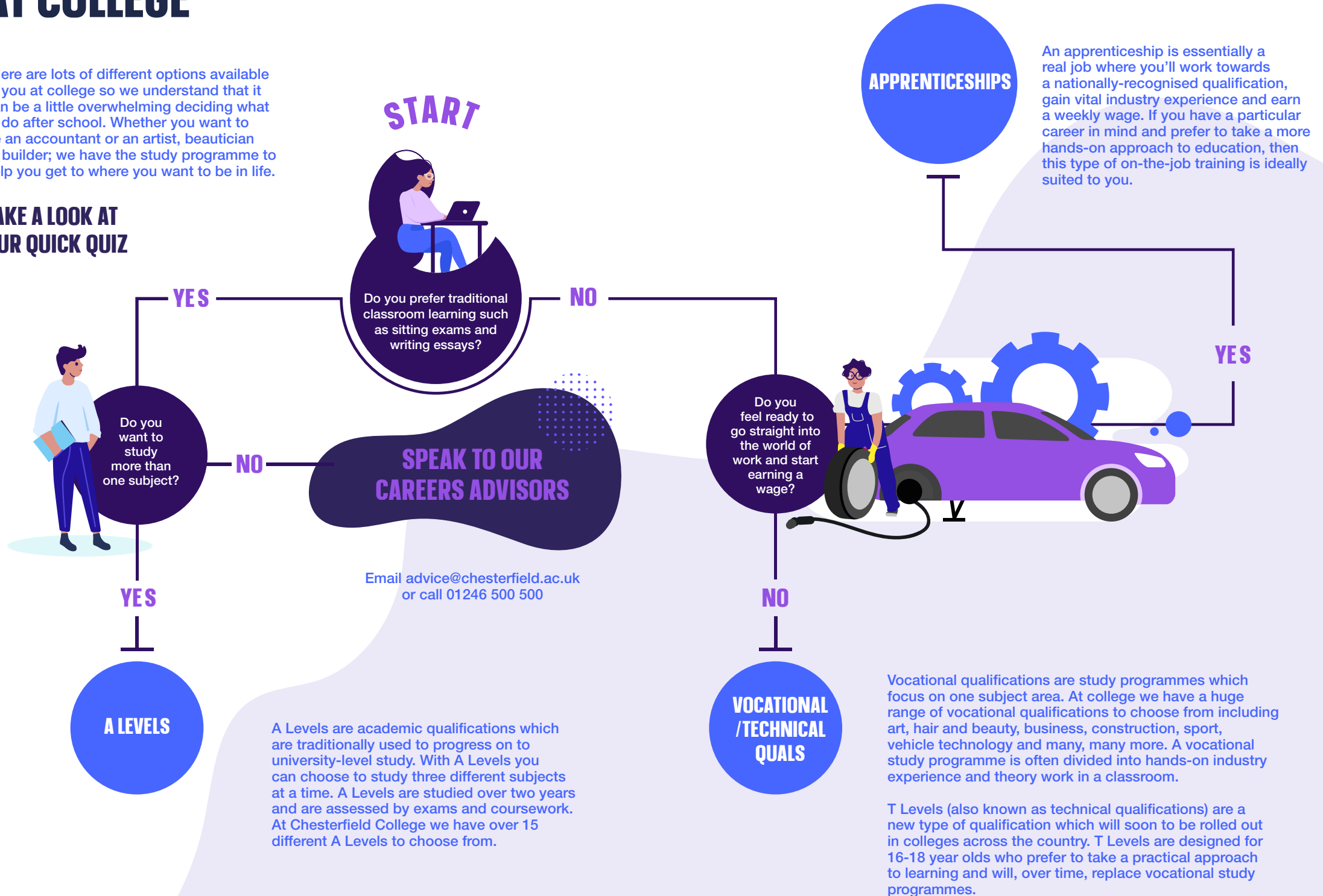
We have a large free car park available to students, staff and visitors which is offered on a first come, first served basis.



# STUDYING AT COLLEGE

There are lots of different options available to you at college so we understand that it can be a little overwhelming deciding what to do after school. Whether you want to be an accountant or an artist, beautician or builder; we have the study programme to help you get to where you want to be in life.

## TAKE A LOOK AT OUR QUICK QUIZ



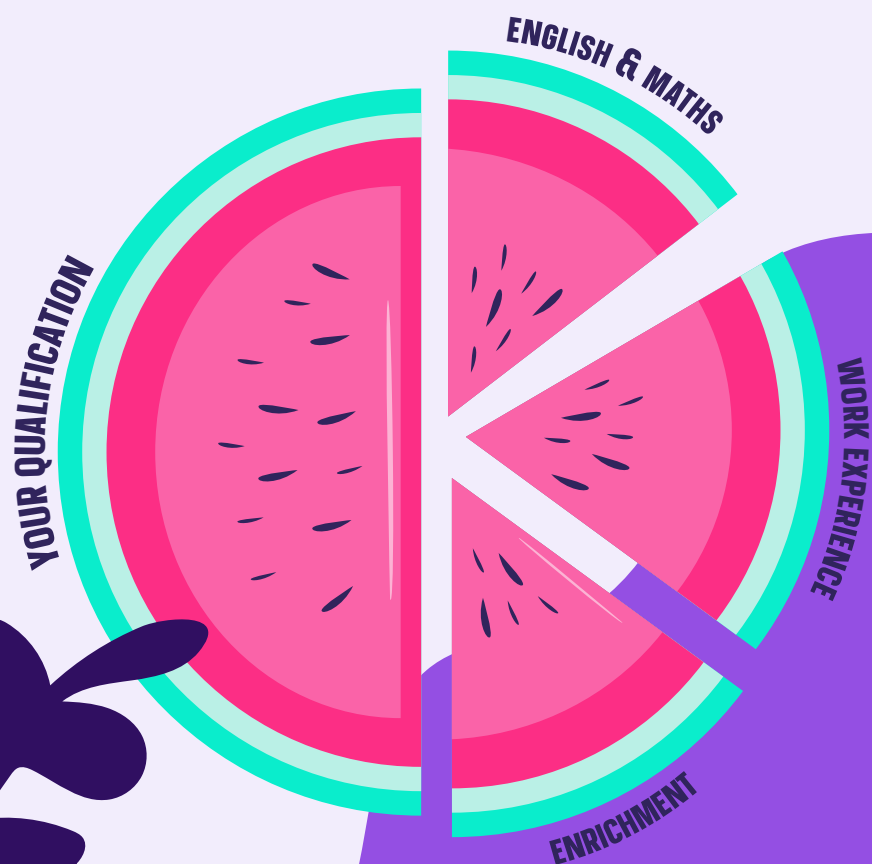
# YOUR STUDY PROGRAMME

As one of our students you will be enrolled onto a study programme which consists of different elements you are required to complete during your time at college.

Your study programme will depend on your existing qualifications, the level you are studying at and the career path you are following. A study programme consists of:

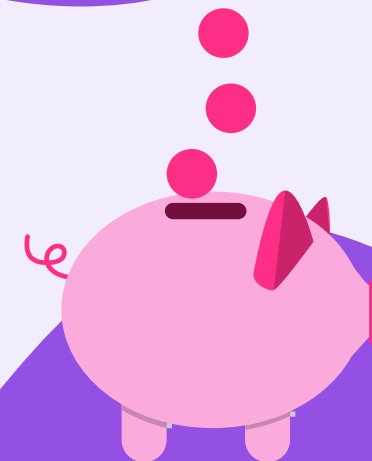
## YOUR QUALIFICATION

The course you are studying will make up the majority of your study programme. However, you may also be expected to incorporate other elements into your studies.



## ENGLISH AND MATHS

You may not think so now, but we cannot stress enough how important English and maths skills are. It's a competitive world out there and employers, in all industries, favour those with a good standard of English and maths. Therefore, if you didn't achieve at least a grade C/4 during your GCSEs then you'll continue to study these essential subjects alongside your course.



## WORK EXPERIENCE

We want you to get off to a great start when you leave us, so it's important to undergo a work experience placement of at least 30 hours during your studies. These placements will provide you with a realistic view of the world of work and will allow you to develop the employability skills you need for the future.

## ENRICHMENT & STUDENTS'

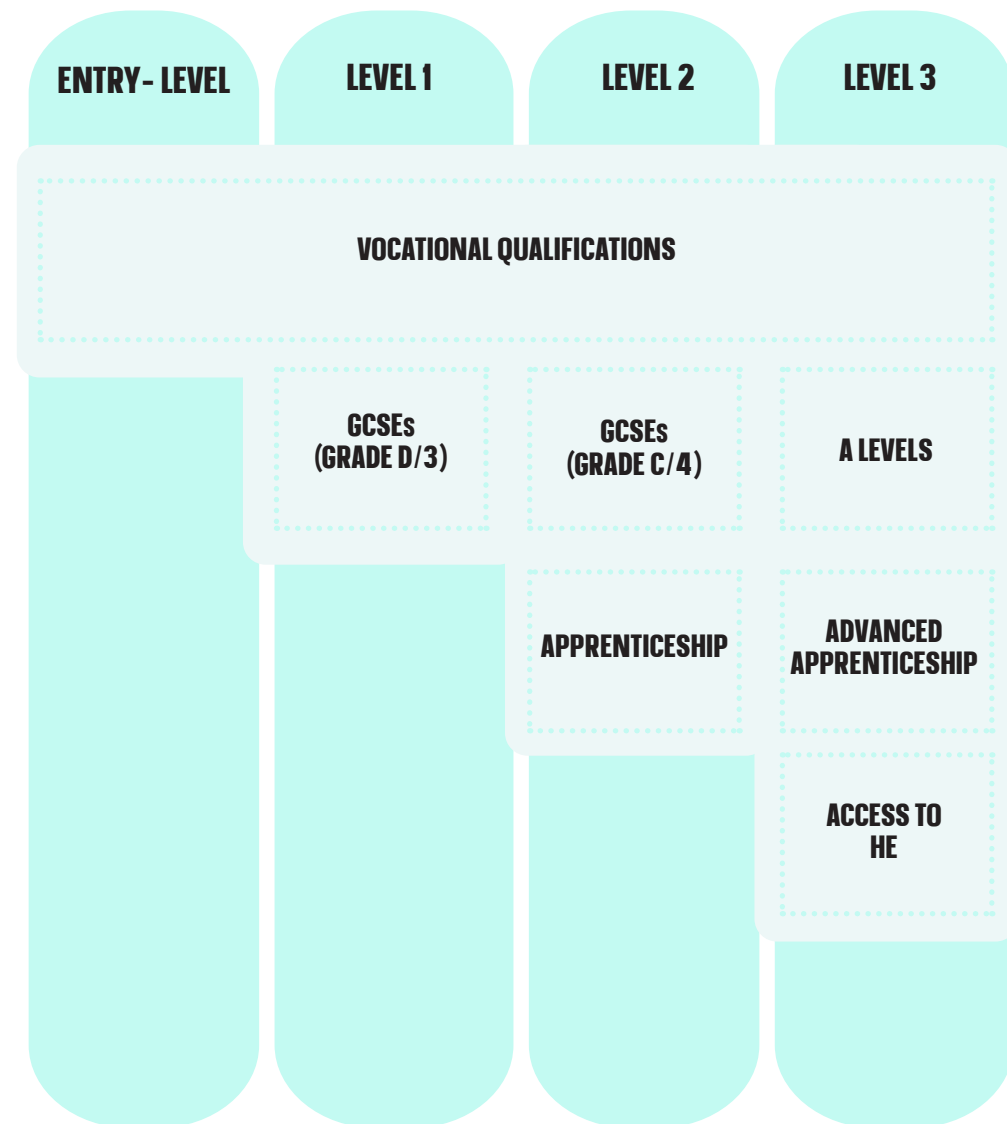
College isn't just about studying; we want your time here to be fun and one that you'll remember. You'll have the opportunity to take part in lots of exciting enrichment activities to help you make new friends, grow in confidence and build as many skills as possible in preparation for your next steps.

You can also make the most of your time at college by joining our Students' Union. You'll be able to have your say on a range of topics that matter to students, from equality and diversity through to student events. It's a great way to get involved in college life and add to your CV.

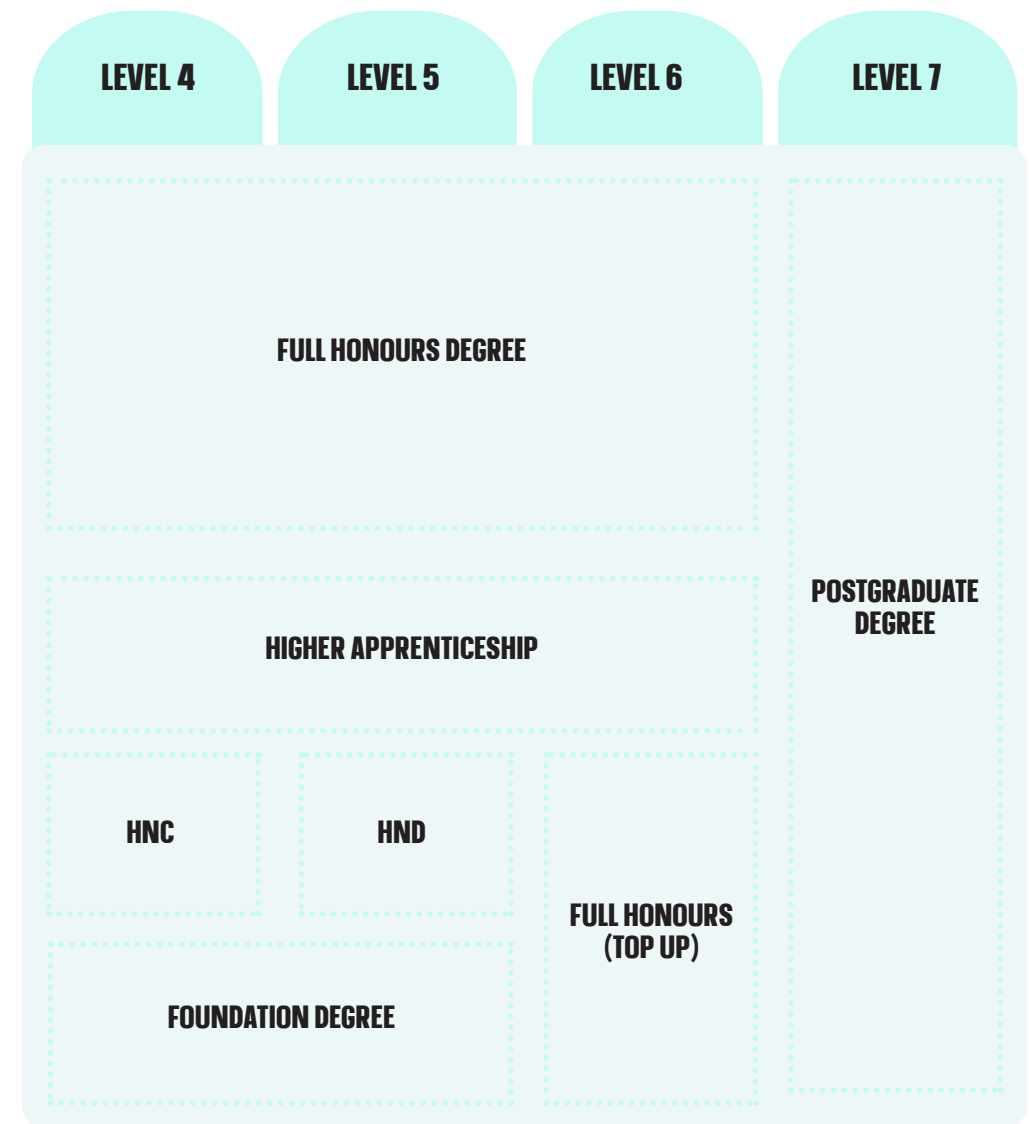
# LEVELS EXPLAINED

From Entry-Level to University-Level, we offer a range of study programmes to support students of all abilities. Many of our students choose to study with us for several years as they progress from one level to the next.

With our study programmes you will be able to interchange how you learn. For instance you could choose to study a Level 2 course at college and then progress to a Level 3 apprenticeship (or vice-versa).



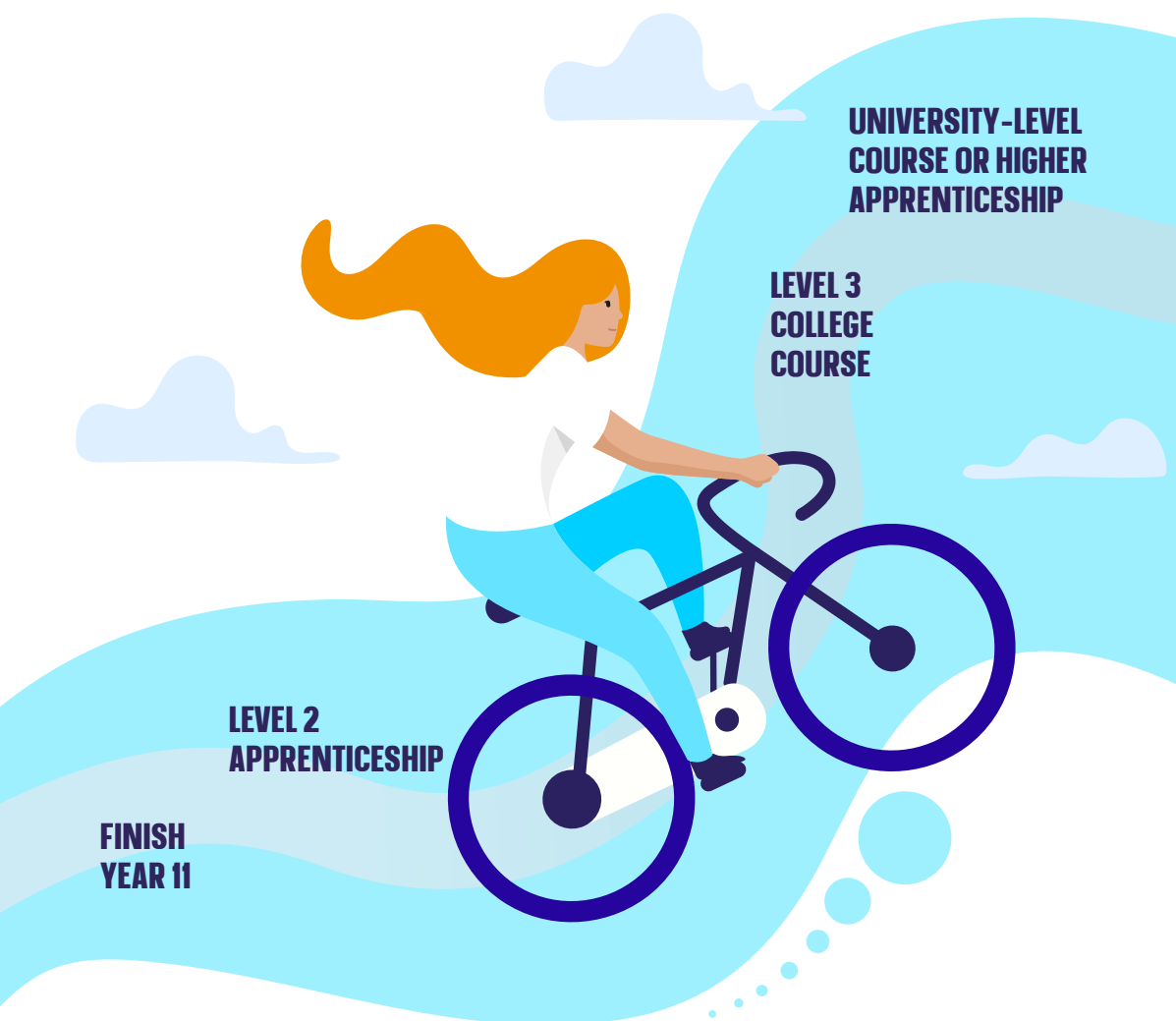
Throughout this guide you will find the college courses, apprenticeships and university-level qualifications we offer at numerous levels to help you reach your career goals. Take a look at the guide below to see how Levels work and what the equivalent qualification may be:





# PATHWAY OPTIONS

**YOU DON'T HAVE TO  
STICK TO THE SAME PATH**



There are so many different ways of studying that it can be difficult to decide which method is better suited to your learning style. The good news is that you don't have to commit to sticking to the same path throughout your studies; you can choose to study a college course in your first year and then move on to an apprenticeship the next.

Take a look at the example above to see just how versatile post-16 education can be.

## ENGAGE APP



Once you become a Chesterfield College student you will be able to access the Engage app. The Engage app will enable you to check your timetable, check which room you need to go, provide you with important updates (on anything from offers in the Eatery to 'snow days'), let's you join or create groups, communicate directly with your tutor and check dates and details for events and activities taking place on campus.

# FACILITIES AT COLLEGE

## HEARTSPACE & EATERY

As the name suggests, the Heartspace is at the heart of the college and is the perfect place to hang out with friends. In the Heartspace there's also the Eatery where you can grab breakfast, lunch and snacks. Whether you're in the mood for pizza, curry, pasta, roast dinner or just a humble sandwich, you'll be spoilt for choice at the Eatery.



## LILY PAD AT THE ARCHES

Offering take-away food, light bites and snacks, Lily Pad offers high quality food exclusively for Chesterfield College students. Lily Pad is located in the University Centre.

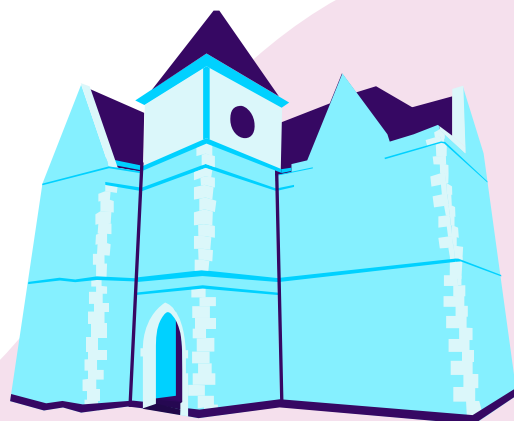
## COSTA COFFEE

We also have an on-site Costa Coffee with sofas and tables for you to spend time with your friends and take a break between classes. We have all the latest cappuccinos, lattes and flavoured teas at student-friendly prices.



## SIXTH FORM CENTRE

Situated in the historic building formally known as the Chesterfield Boy's Grammar School, the Sixth Form centre has been transformed to offer our A Level students an exclusive space to study and relax.



*looks salon*



*taste restaurant*



## SPECIALIST LEARNING WORKSHOPS

From professional kitchens to hair salons which mirror what it's like to work in industry, we have a number of sector specific learning spaces kitted out with the latest equipment and technology.

## UNIVERSITY CENTRE

Located on our main campus, the University Centre is home to all of our university-level students. This dedicated space allows our higher level learners the opportunity to form close-knit groups whilst still being part of the wider college community.

# STUDENT WELLBEING HUB

The Wellbeing Hub is a quiet, relaxing place where you can find out more about the support available to you while you are at college. Whether you need help dealing with exam stress or support with personal issues, we are here to help you get the most out of your time with us.

In the hub you can find:

## ADDITIONAL LEARNING SUPPORT

We pride ourselves on making learning accessible for all. We provide support for those with additional needs. Support includes:

- Literacy and numeracy
- Dyslexia, dyscalculia, dyspraxia and autism spectrum disorder
- Deaf and hearing/visually impaired

## HEALTHY LIFESTYLE

We encourage all of our students to lead a healthy lifestyle. To help you improve your physical and mental wellbeing we arrange a number of activities throughout the year, designed to reduce stress and anxiety as well as build confidence and friendships. We also offer a free daily breakfast for you to start your day at college.

## SAFEGUARDING

We take the health, safety and wellbeing of all our students, staff and visitors very seriously. We have a dedicated team who you can call, text and email with any of your concerns.

## COUNSELLING SERVICE

Our confidential counselling service offers a non-judgemental space for you to discuss anything which is causing you emotional distress.

For more information about the support on offer in our Wellbeing Hub visit:

[www.chesterfield.ac.uk/wellbeing-hub](http://www.chesterfield.ac.uk/wellbeing-hub)



# CAREERS & EMPLOYMENT HUB

Whatever your future goals and career ambitions, we are here to help you on your journey to success. Pop in to the Careers and Employment Hub to find out more about:

## CAREERS ADVICE

Whether you join us at entry-level or university-level, our careers team are here to help you get to where you want to be in life. They can support you before you even apply to college, guide you with progression opportunities and help you with job and university applications.

## WORK PLACEMENT

As part of your study programme you will be expected to carry out a minimum of 30 hours work experience. We are here to help you with finding work placements as well as apprenticeship vacancies and employment if you want a part-time job to aid with your studies.

## CAREER PLAN

If you're not sure what you want to study it might be a good idea to think of your long term career goals to help you decide. If you're still not sure, then thinking about what subjects you enjoy is a good place to start. It may be corny, but if you enjoy your job then you will never have to work a day of your life. If you need help selecting a course or want to talk to us about your career goals, call us on 01246 500500 and we can offer advice and help you come up with a career plan.



To find out more about the service available in the Careers and Employment Hub visit:

[www.chesterfield.ac.uk/careers-and-employment-hub](http://www.chesterfield.ac.uk/careers-and-employment-hub)

# COURSES FOR ADULTS

College isn't just for school leavers. Many adults tell us they're 'too old' to come to college but that simply isn't the case – learning has no age limit!

We understand that returning to education can be nerve-racking for some which is why our adult courses have been specifically designed for those who have been out of education for some time. Whether you're looking to take up a new hobby, need a qualification to aid with career progression or just want to expand your learning, we have a variety of options available to help you secure a job or promotion, learn something new and pursue your passion.

## ADULT ENGLISH & MATHS

Are English and maths skills holding you back? At college, we offer a range of adult English and maths courses to help you gain those all-important qualifications you need to progress into employment or education. From Functional Skills to GCSEs, our courses are designed to suit all abilities and our tutors will work with you on a one-to-one basis to ensure you are learning at a pace to suit you. Our flexible courses can be studied on a part-time basis in the day or evening.



## ESOL (ENGLISH FOR SPEAKERS OF OTHER LANGUAGES)

If English isn't your first language and you want to improve your reading, writing or speaking skills, then our ESOL courses are perfect for you. From courses for beginners to the more advanced, you will learn the key skills you need for everyday life such as work and social situations.

# commercial COURSES

Our commercial offer is vast and covers a number of areas and specialisms. From food safety and MOT testing to photography and plumbing skills, these short, part-time courses are designed to provide you with industry specific skills.

We also offer a range of creative workshops like ceramics and printmaking which are a great opportunity for you to have a bit of fun and meet like-minded people.



Go online to see a full list of courses and start dates throughout the year. We look forward to welcoming you to our adult community here at college.

[www.chesterfield.ac.uk](http://www.chesterfield.ac.uk)

# UNIVERSITY- LEVEL STUDY

At Chesterfield College we have a wide range of flexible university-level courses to help you progress in your career. With lower fees and the flexibility to study on a full or part-time basis, our courses are accessible to everyone and, as a result, we have people of all ages and backgrounds studying with us.

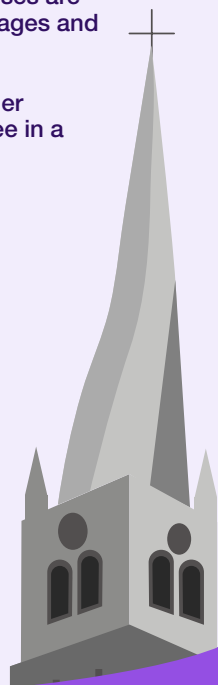
You can choose to study a foundation degree, HNC/HND, higher apprenticeship, professional qualification or full honours degree in a number of subject areas including:

- Public services
- The arts
- Media
- Construction
- Engineering
- Business
- Computing
- Health and social care
- Childcare
- Sport

And much more! Take a look through this guide to find out about the university-level courses we offer.

## UNIVERSITY CENTRE

As one of our Higher Education students you'll study in our specialist University Centre, which is fully-equipped with all the resources you'll need to excel in your studies. We purposely have small class sizes to ease you in to higher level study and ensure that you get lots of one-to-one time with your tutor.



*Study for your degree  
a little closer to home*

## UNIVERSITY PARTNERSHIPS

Through our partnerships with the University of Derby, Sheffield Hallam University and Pearson, you can be sure that the qualification you receive is accredited by a nationally-recognised university or professional awarding body.

## GRADUATION

Each year, Chesterfield College celebrates the achievements of our university-level students with a graduation ceremony. Over 100 graduands attend, along with their guests, and take part in a prestigious ceremony that focuses on our students' successes.

**ACCESS TO**

**HIGHER EDUCATION**

### Not quite ready for university-level study?

The Access to HE course is for those who don't have the qualifications required for entry to a university-level programme. This is a one year course that will provide you with a qualification accepted by most universities for entry, as well as preparing you for the rigours of higher level study – such as researching, academic writing and referencing. You can choose from a range of pathways, including nursing and midwifery, business and law, policing and criminology, humanities and social sciences, computing and education and teaching.

# FEES AND FUNDING

## 16-18 YEARS OLD?

If you're aged 16-18 your full-time college study programme is free (although you may have to pay for course materials, uniforms or trips).

## 19 YEARS OLD AND OVER?

If you're aged 19 and above, then you can take out an Advanced Learner Loan to cover the cost of your studies. This loan is not based on household income, and as it is government funded, you do not have to pay anything back until you are earning £26,000 or more a year.

[www.gov.uk/advanced-learner-loan](http://www.gov.uk/advanced-learner-loan)

## DISCRETIONARY LEARNER SUPPORT

Chesterfield College is able to support some students with up to 75% of their course cost where other forms of funding are unavailable. Please call us on **01246 500500** to discuss your individual circumstances.

To find out more about course fees and funding visit [www.chesterfield.ac.uk/financial-support](http://www.chesterfield.ac.uk/financial-support) or call us on **01246 500500**.



## STUDYING AT UNIVERSITY-LEVEL?

For those of you who are thinking about studying at university level, you will be able to apply for a student loan to cover some of the costs of studying. This is provided by the Student Loans Company and is repaid through small monthly amounts when you have completed your course and are earning over a certain amount. To find out more visit [www.gov.uk/student-finance](http://www.gov.uk/student-finance)

Many of our courses are accredited by universities but our courses fees are lower than other providers. Our course fees (as of 2020) are:

### Foundation degree/full honours degree/HNC/HND

Full-time study £6,995 per year\*  
Part-time study £58.29 per credit\*

### CertEd and PGCE

£58.29 per credit\*

If you have a question regarding fees and finance you can contact us on **01246 500500**.

*\*Fees may change - check our website for the latest fee information.*

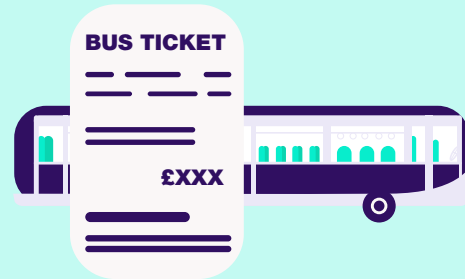




# FINANCIAL SUPPORT AND BURSARIES

## 16-19 BURSARY

If you're aged between 16-19 and your family household income is less than £24,000 (£50,000 for support with travel only) you could be eligible for financial help such as subsidised travel, free meals and contributions towards course materials.

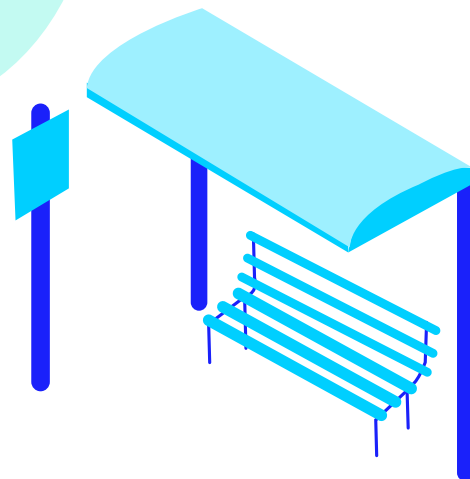


## VULNERABLE YOUNG PERSON BURSARY

You could be eligible for this bursary if you are in care, a care leaver, living independently (in receipt of certain benefits) or have children of your own.

## 19+ DISCRETIONARY LEARNER SUPPORT FUND / ADVANCED LEARNER LOANS BURSARY

If you're aged over 19 and your family household income (or your personal income if you live at home with your parents) is less than £24,000, you could be eligible for this bursary.



## UNIVERSITY-LEVEL BURSARY

Higher education learners have the opportunity to apply for the university-level bursary (which you don't have to pay back) to help with things like travel, books and equipment.

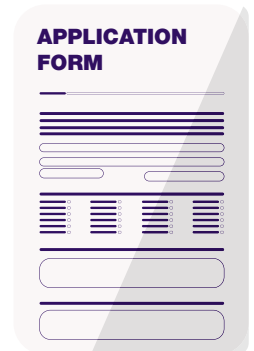


## DISABLED STUDENTS' ALLOWANCE

University-level students with a disability or specific learning disability that requires extra tuition or support may be eligible for this bursary. Please tell us about this as early as possible in the application process so that we can ensure support is in place for the beginning of your studies.

## ADDITIONAL FINANCIAL SUPPORT

University-level students may also be eligible for additional financial support such as council tax relief, child tax credits and Parents' Learning Allowance.

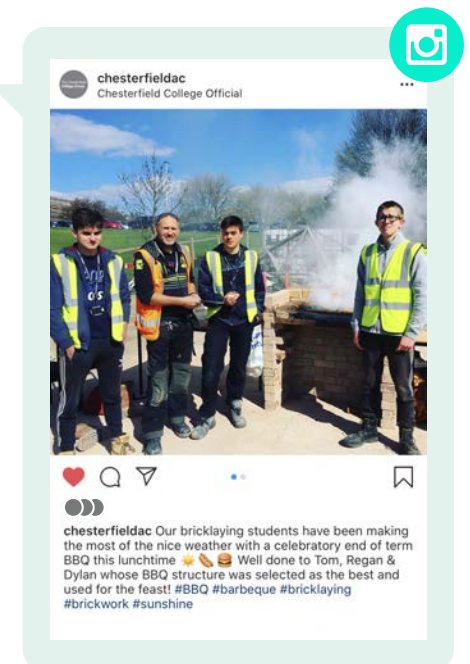
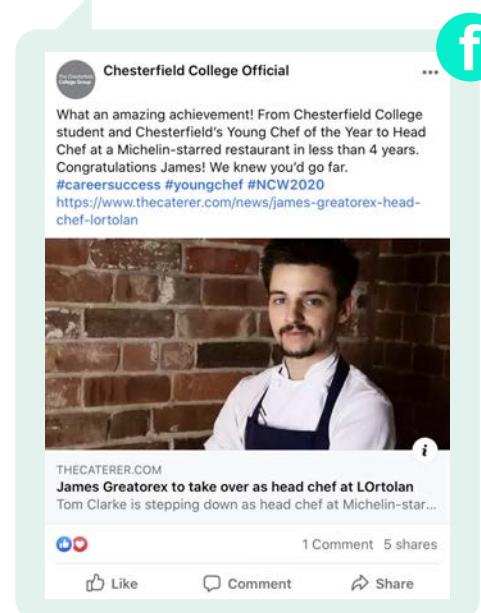
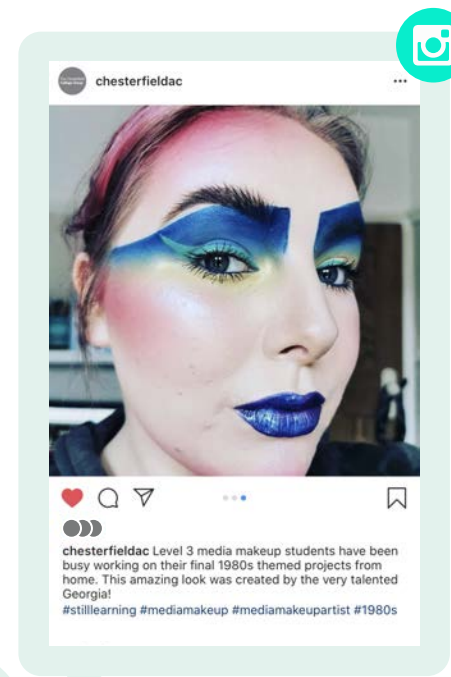


## FOR MORE INFORMATION

visit [www.chesterfield.ac.uk/bursaries](http://www.chesterfield.ac.uk/bursaries)  
or call us on 01246 500500.

# LET'S BE FRIENDS

Follow us on social media to keep up with the latest college news, find out about upcoming events and enter our competitions with some great prizes up for grabs.



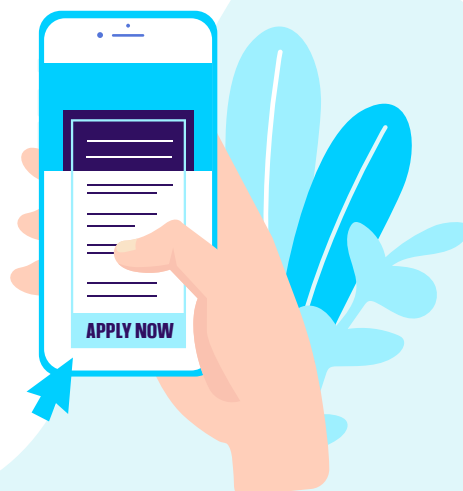


# HOW TO APPLY

## A LEVELS & VOCATIONAL QUALIFICATIONS

If you're ready to apply for a course then great! The quickest and easiest way to apply is online. Simply head over to our website [www.chesterfield.ac.uk/courses](http://www.chesterfield.ac.uk/courses) and search for the course you're interested in.

**If you're unsure what you want to study then why not come along to one of our Taster Sessions?** This is a great opportunity to try out our courses before you apply. For more information about Tasters visit [www.chesterfield.ac.uk/tasters](http://www.chesterfield.ac.uk/tasters)



## DON'T WAIT FOR YOUR GCSE RESULTS!

We also recommend applying as soon as possible to secure your place. There's no need to wait for your GCSE results (if you don't end up getting the results you need for your course then don't panic! We are here to help you find an alternative option).



## APPRENTICESHIPS

If it's an apprenticeship you're interested in and you're ready to start (must be aged 16 or over and completed Year 11), you can take a look at our current vacancies by visiting [www.learningunlimiteduk.com](http://www.learningunlimiteduk.com)

Not yet ready to start an apprenticeship programme or can't find the right programme for you? Register your interest with our apprenticeship team by calling **03458 501055** or email [info@learningunlimiteduk.com](mailto:info@learningunlimiteduk.com)



## UNIVERSITY-LEVEL STUDY

### Full-time courses

For our full-time courses you can apply through [www.ucas.com](http://www.ucas.com). After submitting your application, your offer will be uploaded to UCAS with any conditions you need to meet. For advice and guidance with your application you can contact our careers team on **01246 500500**.

### Part-time courses

If it's a part-time course you want to study, you can apply through our website at [www.chesterfield.ac.uk/courses](http://www.chesterfield.ac.uk/courses)



# STUDY PROGRAMMES

## CONTENTS

- 36** SIXTH FORM
- 44** ART, FASHION & PHOTOGRAPHY
- 50** BUSINESS
- 60** CHILDHOOD STUDIES & EDUCATION
- 66** CONSTRUCTION & BUILDING SERVICES
- 80** DIGITAL TECHNOLOGIES
- 88** ENGINEERING
- 98** FOUNDATION STUDIES
- 102** HAIR & BEAUTY
- 110** HEALTH & SOCIAL CARE
- 116** HOSPITALITY & CATERING
- 122** MEDIA & GRAPHICS
- 128** MUSIC
- 132** PERFORMING ARTS
- 136** PUBLIC SERVICES
- 142** SPORT
- 148** TRAVEL & TOURISM
- 152** VEHICLE ACCIDENT REPAIR & REFINISHING
- 158** VEHICLE TECHNOLOGY

# SIXTH FORM

A Levels are a great choice if you're thinking of moving on to university after college. Whatever your interests or future career aspirations, we have a number of A Levels (and Level 3 equivalents) for you to choose from. As an A Level student you'll study three subjects in our dedicated Sixth Form centre which is situated in the old Chesterfield Boy's Grammar School building on Sheffield Road (part of our main campus).

The historic building, now known as West Studios, has been transformed to offer our A Level students an exclusive space to study and relax in between classes.



APPLY NOW

FOR MORE COURSE INFORMATION AND CAREER PATHWAYS VISIT:  
[WWW.CHESTERFIELD.AC.UK/A-LEVELS](http://WWW.CHESTERFIELD.AC.UK/A-LEVELS)

## A LEVEL ART AND DESIGN

LEVEL 3 2 YEARS

Learn new artistic styles and techniques as you deepen your understanding of contextual and cultural art. To broaden your portfolio you'll study art, craft and design, fine art, graphic communication, textile design and 3D design.

**Entry Requirements:** Five GCSEs at grade 5 or above (including English and maths). You will also need to submit a portfolio of artwork which demonstrates your practical skills.

## A LEVEL BIOLOGY

LEVEL 3 2 YEARS

If you have a keen interest in science and the life cycle of living organisms then this course is for you. You'll study the fundamentals of biology including cells, enzymes and genetics and then learn how to apply and analyse these key concepts.

**Entry Requirements:** Five GCSEs at grade 5 or above (including English, maths and a 6 in science).

## A LEVEL BUSINESS

LEVEL 3 2 YEARS

Business surrounds and impacts our lives everyday. Having knowledge in this field will be beneficial to any future career. During the course you will have the opportunity to explore business scenarios and look in detail at both large and small businesses to learn more about their behaviour, decision making processes and responsibilities.

**Entry Requirements:** Five GCSEs at grade 5 or above (including English and maths).

## A LEVEL CHEMISTRY

LEVEL 3 2 YEARS

Chemistry is a broad subject that you'll explore through both practical and theory based work. You will study elements of organic, inorganic and physical chemistry to develop an in-depth understanding of the subject.

**Entry Requirements:** Five GCSEs at grade 5 or above (including English and a 6 in maths and science).

## A LEVEL ENGLISH LANGUAGE

LEVEL 3 2 YEARS

English language covers the development of language and the history and diversity of the language we use today. You'll learn how to evaluate a wide range of texts from periods throughout time. There are also opportunities for creative writing, a language investigation and a number of trips to enhance your learning.

**Entry Requirements:** Five GCSEs at grade 5 or above (including English and maths).

## A LEVEL ENGLISH LITERATURE

LEVEL 3 2 YEARS

English literature will suit anyone who has a passion for the written word, enjoys learning about narrative texts and exploring characters and plot, as well as the social and historical contexts of texts. You'll learn how to explore texts throughout time from diverse critical approaches such as feminism, Marxism and post-colonialism to eco-criticism and narrative theory.

**Entry Requirements:** Five GCSEs at grade 5 or above (including English and maths).

## A LEVEL GEOGRAPHY

LEVEL 3 2 YEARS

Geography combines the study of both social and natural science. During the course you'll look at the earth and its atmosphere, as well as how human activity can affect them. You'll also study water and carbon cycles, ecosystems and hazards.

**Entry Requirements:** Five GCSEs at grade 5 or above (including English and maths).

## A LEVEL GOVERNMENT AND POLITICS

LEVEL 3 2 YEARS

During this government and politics course you'll develop an understanding of political beliefs which will provide you with the foundation you need for further study. You'll study contemporary politics in context of the UK government, EU and wider world.

**Entry Requirements:** Five GCSEs at grade 5 or above (including English and maths).

## A LEVEL HISTORY

LEVEL 3 2 YEARS

History opens up fascinating and dynamic ways of thinking about society and humanity; students progressing from history related courses are in high demand as universities and employers value those who can retain and process complex information.

**Entry Requirements:** Five GCSEs at grade 5 or above (including English and maths).

## A LEVEL MATHS

LEVEL 3 2 YEARS

To study maths at this level you need to have a basic understanding of trigonometry so that you can build on your existing knowledge and start performing more complicated calculations. You'll also gain an in-depth understanding of statistics, algebra and calculus throughout the course.

**Entry Requirements:** Five GCSEs at grade 5 or above (including English and a 6 in maths and science).

## A LEVEL FURTHER MATHS

LEVEL 3 2 YEARS\*

Further maths is ideally suited to those who enjoy the subject and want to progress on to a maths-based course at university. The course is designed to deepen your mathematical knowledge.

**Entry Requirements:** You will need to be studying A Levels Maths and have five GCSEs at grade 5 or above (including English and a 6 in maths).

\*2 years (although this is only usually taken at AS Level as an additional subject).

## A LEVEL MEDIA STUDIES

LEVEL 3 2 YEARS

From print to film, as a society we are exposed to media on a daily basis. During the course you'll learn how to view, evaluate and analyse a variety of media products including film, TV, advertising, news, social media and print.

**Entry Requirements:** Five GCSEs at grade 5 or above (including English and maths).

## A LEVEL PHILOSOPHY

LEVEL 3 2 YEARS

Philosophy is the study of knowledge, reality and existence. You'll use logic and different ways of thinking to shine light on some of life's big questions. This philosophy course is designed to help you become a great thinker, and will teach you how to explain, analyse and evaluate different concepts.

**Entry Requirements:** Five GCSEs at grade 5 or above (including English and maths).

## A LEVEL PHYSICS

LEVEL 3 2 YEARS

Physics is the study of energy, forces, waves and the structure of atoms within the universe. Having a basic understanding of physics is vital to understanding our planet and the galaxies beyond. During the course you'll gain in-depth knowledge of topics such as moving objects, waves, the sun, galaxies, electricity and sub-atomic particles.

**Entry Requirements:** Five GCSEs at grade 5 or above (including English, maths and a 6 in science).

## A LEVEL PSYCHOLOGY

LEVEL 3 2 YEARS

Psychology is the study of the human brain, its functions and human behaviour. Psychology is a science which involves biology, the nervous system and analysing data. As part of the course you will investigate topics such as memory, parental attachment, conformity and brain functions.

**Entry Requirements:** Five GCSEs at grade 5 or above (including English, maths and science).

## A LEVEL SOCIOLOGY

LEVEL 3 2 YEARS

Sociology is the study of human society including the role we play in its development, structure and functioning. During the course you will focus on a number of social issues such as money, crime and poverty, human rights, the criminal justice system and the media.

**Entry Requirements:** Five GCSEs at grade 5 or above (including English and maths).

# COLLEGE COURSES

## DIPLOMA IN CRIMINOLOGY

LEVEL 3 2 YEARS

If you're interested in why people commit crimes and enjoy researching criminal cases then this is the course for you. Criminology aims to develop your understanding of the reasons why people commit crimes and the process of criminal investigations.

**Entry Requirements:** Five GCSEs at grade 5 or above (including English and maths).

## EXTENDED CERTIFICATE IN APPLIED LAW

LEVEL 3 2 YEARS

Law is an important subject that governs all aspects of our lives. This course aims to provide you with an understanding of the English legal system as well as the laws and policies surrounding it. You'll focus on getting to grips with criminal law (crimes against society) and civil law (when two parties are in disagreement).

**Entry Requirements:** Five GCSEs at grade 5 or above (including English and maths).

## A LEVEL EQUIVALENTS

## EXTENDED CERTIFICATE IN APPLIED SCIENCE

LEVEL 2 1 YEAR

During this course you'll study in a real lab environment and develop valuable scientific and practical skills which will allow you to progress to Level 3 qualifications.

**Entry Requirements:** Four GCSEs at grade 3 or above. This course is designed as a pathway onto the level 3 diploma for those who need to retake GCSE English and maths.

## EXTENDED DIPLOMA IN APPLIED SCIENCE

LEVEL 3 2 YEARS

This course is equivalent to three A Levels and is designed by universities to allow you to gain the skills and knowledge you need to succeed in your future scientific career. You'll study modules such as forensic science, crime scene investigation, astronomy and diseases.

**Entry Requirements:** Five GCSEs at grade 5 or above (including English and maths).



“

## JAMIE TAGG

”

*Chemistry, Biology and Criminology*

“Chesterfield College Sixth Form has had a huge positive impact on my life. My tutors have been incredibly supportive which helped me to get through the toughest parts of my first year; they always encouraged me to be a better version of myself.

I've met lots of new people here and I am looking forward to continuing and expanding my knowledge in my subjects. Studying at college has meant that I'm able to pursue my dreams, which I previously didn't think was possible. I want to go on to university to study chemistry. If it hadn't have been for my chemistry tutor, I wouldn't have believed it was possible. Chesterfield College has changed my life for the better.”

“

## OLIVIA LAIKEN

”

*History and Philosophy*

“Getting an A in History and a B in Philosophy means I can go to my first-choice university and start the next stage of my learning. I've got a place at Durham University to study History. After my mocks I put in so much extra work and got lots of support from my tutor, so I am glad that it has paid off.”



# ART, FASHION & PHOTOGRAPHY

As an art and design student at college you'll have the opportunity to let your creative flair run wild. You'll have access to outstanding resources and facilities such as a ceramics studio, dark room and silversmithing workshop.

At Chesterfield College, we have great relationships with universities and art colleges, allowing our students to benefit from exclusive lectures and workshops. You'll also have the opportunity to create your own exhibitions as part of our end of year Arts Festival and fashion show, so you can really show off your talent.



## CAREER IDEAS

ILLUSTRATOR

FASHION DESIGNER

PHOTOGRAPHER

VISUAL MERCHANDISER

CREATIVE DIRECTOR

FREELANCE ARTIST



APPLY NOW

FOR MORE COURSE INFORMATION AND CAREER PATHWAYS VISIT:  
[WWW.CHESTERFIELD.AC.UK/ART-FASHION-PHOTOGRAPHY](http://WWW.CHESTERFIELD.AC.UK/ART-FASHION-PHOTOGRAPHY)



## COLLEGE COURSES

£31,262  
AVERAGE SALARY  
FOR ARTISTS

### BTEC DIPLOMA IN ART AND DESIGN

LEVEL 1 1 YEAR

This introductory course will provide you with a solid foundation to develop your skills and understanding within the art, design and media industries. You'll have the opportunity to learn practical skills across a range of disciplines.

**Entry Requirements:** Four GCSEs at grade 1 or above (including English or maths), or a relevant Entry Level 3 qualification.

### BTEC DIPLOMA IN ART AND DESIGN

LEVEL 2 1 YEAR

Explore and develop your creative ideas in specialist areas of art and design including two and three dimensional design, painting and drawing, graphics, digital imagery and textiles. You'll build your portfolio and exhibit your work at our end of year Arts Festival.

**Entry Requirements:** Three GCSEs at grade 3 or above, or a relevant Level 1 qualification.

### BTEC DIPLOMA IN ART AND DESIGN

LEVEL 3 2 YEARS

During this course you'll have the opportunity to explore a variety of disciplines within art and design. You'll focus on developing your understanding and application of visual language and the creative process to create ideas, solutions and outcomes.

**Entry Requirements:** Four GCSEs at grade 4 or above, or a relevant Level 2 qualification.

### BTEC DIPLOMA IN FASHION AND CLOTHING (ART AND DESIGN)

LEVEL 3 2 YEARS

If you're interested in fashion and clothing design then this is the course for you. During the course you'll develop skills in model making, illustration and creative advertising to create garments. You'll learn about 2D pattern development, 3D design, textile techniques, fashion illustration and fashion design.

**Entry Requirements:** Four GCSEs at grade 4 or above, or a relevant Level 2 qualification.

## COLLEGE COURSES

### UAL DIPLOMA IN PHOTOGRAPHY

LEVEL 3 2 YEARS

Photographers need creative, technical and professional skills to create eye catching images, this course is designed to concentrate on building these key skills. You'll focus on digital photography and image editing, black and white film, audio and video editing, and industry practice in the studio and on location.

**Entry Requirements:** Four GCSEs at grade 4 or above, or a relevant Level 2 qualification.

### BTEC FOUNDATION DIPLOMA IN ART, DESIGN AND MEDIA PRACTICE

LEVEL 3 1 YEAR

This course is designed to build on your prior experiences within art and design. You'll have the opportunity to explore a range of art disciplines such as fine art, photography, fashion, graphic design and ceramics, with the aim to then focus on one area to really build on your existing skills.

**Entry Requirements:** Two A Levels at grade C or above, or a relevant Level 3 qualification.

## UNIVERSITY-LEVEL STUDY AT COLLEGE

### HNC/HND PHOTOGRAPHY

LEVEL 4/5 1 YEAR FULL-TIME\*

During the course you will develop your creative thinking skills which will allow you to communicate your creative ideas through visual, written and oral presentation. For more detailed module information please visit our website.

**Entry Requirements:** A relevant Level 3 qualification and English and maths at grade C/4 or above at GCSE, or a Level 2 equivalent. Mature learners with relevant experience will also be considered.

\*Additional year full-time to top up to the HND



“

”

## ATALANTA LAWSON-COYLE

*Level 3 Diploma in Fashion and Clothing (Art and Design)*

“When I first started at Chesterfield College I was interested in fashion but I had no idea about the career I wanted in the industry. There are so many different elements to the course which helped me to work out what I enjoyed the most. I didn't like the manufacturing side much but I really loved the research elements, working with clients, creating mood boards and looking at trends. My tutors really helped me to think about the career options open to me and develop my skills to build a portfolio that would get me noticed.

My portfolio and the encouragement of tutors has helped me to secure a place at the highly sought after Conde Nast College of Fashion and Design to study a Fashion Communications degree. In my application for the degree course I could show the range of things I was capable of doing from all of the projects we had worked on at college. I included examples of working on live projects with a local clothing manufacturer, where we had to design for their target market; reviews of exhibitions as well as designing and creating mood boards for collections.

After completing my degree, I will be able to choose from a range of careers including editorial roles in fashion publishing, advertising or event management. There are so many options like becoming a stylist, a photographer or a fashion art director. I really believe studying at Chesterfield College has built my confidence and helped me to build the skills I will need for my future career.”



CLOTHING AND  
PRODUCT DESIGNER  
ROLES ARE EXPECTED  
TO RISE IN THE NEXT  
FEW YEARS

# BUSINESS

From major corporations to small and medium-sized enterprises (SMEs) and sole traders, business provides a vital contribution to communities. It creates income, provides wealth and leads innovation and creativity across all sectors.

At Chesterfield College, our business students have the chance to study a wide range of topics, from sales and marketing to finance and enterprise, providing a fundamental understanding of the world of business. There are both theoretical and practical elements to our courses which have all been designed to develop your employability skills.



## CAREER IDEAS

ACCOUNTANT

HUMAN RESOURCES OFFICER

MARKETER

BUSINESS OWNER

RETAIL MANAGER

TEAM LEADER

ENTREPRENEUR



APPLY NOW

FOR MORE COURSE INFORMATION AND CAREER PATHWAYS VISIT:  
[WWW.CHESTERFIELD.AC.UK/BUSINESS](http://WWW.CHESTERFIELD.AC.UK/BUSINESS)

# COLLEGE COURSES

£48,131  
AVERAGE SALARY FOR  
BUSINESS AND FINANCE  
MANAGERS

## CERTIFICATE IN BUSINESS AND TRAVEL

LEVEL 1 1 YEAR

This course is ideal if you're planning a career in business or travel but aren't quite ready to study a Level 2 programme. You'll learn important skills such as being organised and working with others to prepare you for further study.

**Entry Requirements:** Four GCSEs at grade 1 or above.

## DIPLOMA IN BUSINESS AND ENTERPRISE

LEVEL 2 1 YEAR

This course will provide you with a thorough understanding of business culture and how roles and responsibilities impact a business environment. You'll learn how to solve problems, communicate and work effectively with others and how to manage and improve your own performance within a business setting.

**Entry Requirements:** Four GCSEs at grade 4 or above (including English or maths).

## EXTENDED DIPLOMA IN BUSINESS

LEVEL 3 2 YEARS

Learn about a range of organisations, jobs and subjects that are relevant to the world of business today, whether you want to go on to further study, employment or set up your own business. You'll cover aspects such as accounting, human resources, marketing, events and more.

**Entry Requirements:** Four GCSEs at grade 4 or above (including English or maths).

# APPRENTICESHIPS

## BUSINESS

## ACCOUNTING

### FINANCE ASSISTANT

LEVEL 2 13 MONTHS

As a finance assistant you can expect to carry out basic bookkeeping activities, work with sales and purchase accounts, perform calculations to ensure records and payments are correct and undertake basic data entry.

**Entry Requirements:** English and maths at GCSE grade C/4 or above (or Level 2 equivalent).\*

### ASSISTANT ACCOUNTANT

LEVEL 3 18 MONTHS

As an assistant accountant you will assist with day-to-day financial activities such as data entry, month end, financial statements and account management. You may also work with VAT returns and carry out tax preparations.

**Entry Requirements:** English and maths at GCSE grade C/4 or above (or Level 2 equivalent) and a Level 2 accountancy qualification. Mature learners with relevant experience will also be considered.\*

### PROFESSIONAL ACCOUNTING

LEVEL 4 24 MONTHS

As a professional accountant you will have responsibility for creating, verifying and reviewing financial information for your organisation to make sure it is accurate, timely and of legal standard. You will utilise your knowledge of business systems and processes as well as standard account and tax practices.

**Entry Requirements:** English and maths at GCSE grade C/4 or above (or Level 2 equivalent) and a Level 3 accountancy qualification. Mature learners with relevant experience will also be considered.\*

## CUSTOMER SERVICE

### CUSTOMER SERVICE PRACTITIONER

LEVEL 2 15 MONTHS

The role of a customer service practitioner is to deliver a high quality service to the customers of an organisation. Depending on the organisation, this may involve dealing with orders and payments, offering advice and guidance or fixing problems and providing aftercare.

**Entry Requirements:** English and maths at GCSE grade C/4 or above (or Level 2 equivalent).\*

### CUSTOMER SERVICE

#### CUSTOMER SERVICE SPECIALIST

LEVEL 3 18 MONTHS

As a customer service specialist you will deal with more complex or technical customer requests, complaints and queries. You will need to have expert knowledge in your organisation's products/services in order to provide customers with the information they need.

**Entry Requirements:** English and maths at GCSE grade C/4 or above (or Level 2 equivalent) as well as advanced inter-personal skills and experience working with customers.\*

#### TEAM LEADER/SUPERVISOR

LEVEL 3 15 MONTHS

As a team leader/supervisor you will be responsible for leading others. Key responsibilities may include supporting and managing team members, managing projects, monitoring workloads and resources, and resolving problems.

**Entry Requirements:** English and maths at GCSE grade C/4 or above (or Level 2 equivalent), experience of supervising a team and completion of an initial taster assignment.\*

### BUSINESS ADMINISTRATION

#### BUSINESS ADMINISTRATION

LEVEL 3 18 MONTHS

As a business administrator you will have a range of transferable skills which can be applied to many aspects of business. You'll be expected to show initiative, manage your time, prioritise workload efficiently and use problem solving skills.

**Entry Requirements:** English and maths at GCSE grade C/4 or above (or Level 2 equivalent).\*

#### SCHOOL BUSINESS PROFESSIONAL

LEVEL 4 18 MONTHS

A school business professional carries out a unique set of tasks in a school setting. Responsibilities may include drafting a budget, managing the campus, procuring goods and services, identifying income opportunities and managing support staff.

**Entry Requirements:** English and maths at GCSE grade C/4 or above (or Level 2 equivalent) and a relevant Level 3 qualification.\*

### MARKETING

#### DIGITAL MARKETER

LEVEL 3 18 MONTHS

As a digital marketer you will design, build and implement digital campaigns across a variety of online and social media platforms to build customer relationships.

**Entry Requirements:** English and maths at GCSE grade C/4 or above (or Level 2 equivalent) and a relevant Level 2 qualification.\*

#### JUNIOR CONTENT PRODUCER

LEVEL 3 15 MONTHS

A junior content producer (also known as a creative content assistant) is responsible for developing and creating content that can be used across a variety of media such as digital, print and social media.

**Entry Requirements:** English and maths at GCSE grade C/4 or above (or Level 2 equivalent) and a relevant Level 2 qualification.\*

**\*Please note:** Students without English and maths will be expected to take these alongside their apprenticeship. Employers may also set their own entry requirements in addition to the ones outlined above.

## UNIVERSITY-LEVEL STUDY AT COLLEGE

#### ACCESS TO HE BUSINESS

LEVEL 3 1 YEAR FULL-TIME

Access courses are designed to provide learners, who have been out of education for some time, the chance to gain the qualifications they need for higher level study. During this course you'll focus on marketing, planning, strategy, business environment, human resources and finance to help you prepare for your future career.

**Entry Requirements:** GCSE English at grade C/4 or above and at least a D/3 in GCSE maths (if you have not achieved GCSE maths you will have the opportunity to take this alongside your course). You must also have relevant work experience or be willing to undertake this during your studies.

# UNIVERSITY-LEVEL STUDY AT COLLEGE

## BUSINESS

### HNC/HND BUSINESS

LEVEL 4/5 1 YEAR FULL-TIME\*

Learn how to prepare for the ever changing world of business with this higher level course. You'll cover areas such as sales, retail, marketing and accountancy to really get to grips with the key aspects business owners and entrepreneurs need.

**Entry Requirements:** A relevant Level 3 qualification and English and maths (at grade C/4 or above at GCSE, or a Level 2 equivalent). Mature learners with relevant experience will also be considered.

\*Additional year full-time to top up to the HND

## PROFESSIONAL QUALIFICATIONS

### CERTIFICATE IN ACCOUNTING

LEVEL 2 1 YEAR PART-TIME\*

This introductory AAT course covers basic account practises and techniques including costing, double-entry bookkeeping and how to use accounting software.

**Entry Requirements:** English and maths at GCSE grade C/4 or above. Mature learners with relevant experience will also be considered.

\*Daytime and evening classes available

### ADVANCED DIPLOMA IN ACCOUNTING

LEVEL 3 1 YEAR PART-TIME\*

This advanced AAT qualification introduces more complex accounting tasks such as maintaining cost accounting records and the preparation of reports and returns.

**Entry Requirements:** AAT Level 2 qualification and English and maths at GCSE grade C/4 or above.

\*Daytime and evening classes available

### PROFESSIONAL DIPLOMA IN ACCOUNTING

LEVEL 4 1 YEAR PART-TIME

This professional AAT course will provide you with higher level accounting knowledge such as how to draft financial statements, manage budgets and evaluate financial performance.

**Entry Requirements:** AAT Level 3 qualification and English and maths at GCSE grade C/4 or above. Significant work experience is also required.

### DIPLOMA IN HUMAN RESOURCES PRACTICE

LEVEL 3 1 YEAR PART-TIME

This CIPD course provides an industry-recognised qualification to business professionals looking to further develop their career in human resources.

**Entry Requirements:** A relevant Level 2 qualification.

### DIPLOMA IN HUMAN RESOURCES MANAGEMENT

LEVEL 5 1 YEAR PART-TIME

This CIPD course is ideal for those looking to develop a career in human resources management. You will gain a broad perspective of HR and development management skills and knowledge.

**Entry Requirements:** A relevant Level 3 qualification.



“

## MAX OSEI BONSU

*Level 3 Diploma in Business*

”

"I first decided to come to Chesterfield College because it was the only college in the area that allowed me to study English and maths alongside a business course. I've always had a thing for business so I wanted to pursue it at a higher level.

At college we have great work experience opportunities; I've been able to go on work placement at Citizens Advice which has been really useful for my long term career goal of working in law. We also have guest speakers who come in to college to speak to us about their business, which has been great because we've been able to get an insight into how a real business operates and also get tips for when we go into business ourselves.

I have found it difficult at times juggling English and maths while also studying a business course but my tutors have been incredibly supportive of me and helped with my work load. I've really enjoyed the environment at college; the equipment here is great which just makes learning so much easier.

To anyone thinking about studying at college, I would say to give it a shot; there are so many opportunities and great people here, you won't regret it. I'm now really excited to go to the University of Bedfordshire to study law this September."



# CHILDHOOD STUDIES & EDUCATION

If you're a caring, responsible, patient, calm, efficient, energetic and creative person then a career in an early years setting will suit you.

As a childhood studies student you can choose from a wide range of career pathways leading to jobs in education, social work and early years childcare. Our courses include both practical and theoretical elements designed to help you learn the transferable skills you need for your chosen career.

As part of your studies you will be required to secure a work placement in your chosen field. We have great working relationships with many employers who provide valuable hands-on experience to help students develop their skills and knowledge.



## CAREER IDEAS

SOCIAL WORKER

TEACHER

TEACHING ASSISTANT

NURSERY ASSISTANT

FAMILY SUPPORT OFFICER

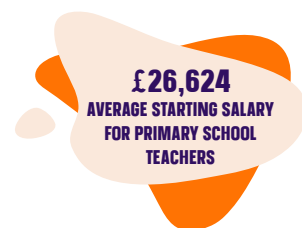
COMMUNITY SUPPORT WORKER



APPLY NOW

FOR MORE COURSE INFORMATION AND CAREER PATHWAYS VISIT:  
[WWW.CHESTERFIELD.AC.UK/CHILDHOOD-STUDIES](http://WWW.CHESTERFIELD.AC.UK/CHILDHOOD-STUDIES)

# COLLEGE COURSES



## DIPLOMA IN CARING FOR CHILDREN

LEVEL 1 1 YEAR

This course will act as a starting point for those thinking about a career in childcare. Although you won't be able to go straight into employment after this course, it will prepare you for the next level of study.

**Entry Requirements:** Four GCSEs at grade 1 or above (with a minimum of 2 in English or maths), or a relevant Entry Level qualification.

## DIPLOMA FOR THE EARLY YEARS EDUCATOR

LEVEL 2 1 YEAR

During this course you'll gain an understanding of child development from birth to 7 years old. This course is ideal if you're thinking of working with children in educational settings such as nurseries, pre-schools or infant schools.

**Entry Requirements:** Four GCSEs at grade 3 or above (including English or maths), or a relevant Level 1 qualification.

## TECHNICAL DIPLOMA IN CHILDCARE AND EDUCATION (EARLY YEARS EDUCATOR)

LEVEL 3 2 YEARS

During this course you'll develop an in-depth understanding of child development and study modules such as play and learning, observation, working with parents and supporting literacy and numeracy development.

**Entry Requirements:** Five GCSEs at grade 4 or above (including English and maths), or a relevant Level 2 qualification.

# APPRENTICESHIPS

## CHILDHOOD STUDIES

## EARLY YEARS PRACTITIONER

LEVEL 2 12 MONTHS

As an early years practitioner you'll interact with children on a daily basis and support the planning and delivery of activities and educational programmes. You'll support children's learning through play and ensure their wellbeing at all times.

**Entry Requirements:** There are no formal entry requirements however, candidates without Level 1 qualifications in English and maths must achieve these and be willing to undertake a test for Level 2 before they complete their apprenticeship.

## TEACHING ASSISTANT

LEVEL 3 18 MONTHS

As a teaching assistant you'll support class teachers to enhance learning on an individual or group basis. You must be a good role model and help students to work towards their objectives.

**Entry Requirements:** GCSE English and maths at grade C/4 or above and ideally some experience working in a school setting, or a relevant Level 2 qualification.

## EARLY YEARS EDUCATOR

LEVEL 3 18 MONTHS

Early years educators are highly trained professionals who play a key role in helping children learn and develop. You'll ensure all children are safe and secure and also supervise learning activities.

**Entry Requirements:** GCSE English and maths at grade C/4 or above and ideally some experience working in an early years setting, or a relevant Level 2 qualification.

\*Please note: Students without English and maths will be expected to take these alongside their apprenticeship. Employers may also set their own entry requirements in addition to the ones outlined above.



# UNIVERSITY-LEVEL STUDY AT COLLEGE

## AWARD IN EDUCATION AND TRAINING (LEARNING AND DEVELOPMENT)

LEVEL 3 10 WEEKS

This is a short introductory course to teaching and assessment and is aimed at those who would like to progress into teaching or training. You'll be given an insight into the different roles and responsibilities within the education sector.

**Entry Requirements:** GCSE English and maths at grade C/4 or above (or Level 2 equivalent) and basic IT skills.

## FOUNDATION DEGREE IN CHILDREN AND YOUNG PEOPLE

LEVEL 4-5 2 YEARS PART-TIME

This course aims to develop you as a confident, knowledgeable and effective practitioner to work with children, young people and their families in the children's and young people's service sector.

**Entry Requirements:** A relevant Level 3 qualification, GCSE English and maths at grade C/4 or above and a two day a week placement/employment. Mature learners with relevant experience will also be considered.

## FOUNDATION DEGREE IN EDUCATION POST 14 (EDUCATION AND TRAINING)

LEVEL 4-5 2 YEARS PART-TIME

This nationally recognised teaching qualification will allow you to teach in a variety of learning environments such as Further Education colleges, schools, adult and community education, prisons and public services.

**Entry Requirements:** A relevant Level 3 qualification in the area you wish to teach, GCSE English and maths at grade C/4 or above (or Level 2 equivalent) and access to a minimum of 50 teaching hours per year of the course (in a full teaching role) within a 20 mile radius of the college.

## POSTGRADUATE CERTIFICATE IN EDUCATION POST 14 (EDUCATION AND TRAINING)

LEVEL 7 2 YEARS PART-TIME

This nationally recognised teaching qualification will allow you to teach in a variety of learning environments such as Further Education colleges, schools, adult and community education, prisons and public services.

**Entry Requirements:** A relevant Level 6 qualification in the area you wish to teach, GCSE English and maths at grade C/4 or above (or Level 2 equivalent) and access to a minimum of 50 teaching hours per year of the course (in a full teaching role) within a 20 mile radius of the college.

## CHILDHOOD STUDIES



## PAIGE WISTOW



*Level 3 Diploma in Childcare and Education (Early Years Educator)*

"For as long as I can remember I've had a passion for working with young children. I volunteer at the Beaver Scouts and really enjoy it so I knew I had to come to college to follow my dream career of becoming a teacher. I didn't know anyone at college so it was a little scary to begin with, but my class were so welcoming that it didn't take me long to settle in. We're all really good friends now. College is so much better for me than school.

During the course we are classroom-based for 3 days a week and we get to go on placement for the other 2 days. We work with babies and young children up to eight years old. My favourite has been the nursery placement, working with kids aged 2-5. I really enjoy teaching the children something new and then seeing them remember it a few days later. The childhood studies tutors are such a great team; they go above and beyond to help all of their students.

I am now planning on pursuing a career in teaching. I've secured a job as a teaching assistant at a local school, working in the nursery. I'm really enjoying it. Next year I want to come back to college to study the Level 4/5 foundation degree part-time whilst also working in the nursery."

912 TEACHING  
ASSISTANT JOB  
VACANCIES IN THE  
CHESTERFIELD REGION IN  
THE LAST 3 YEARS

# CONSTRUCTION & BUILDING SERVICES

From brickwork and plumbing, to joinery and painting and decorating, at Chesterfield College we can provide you with the knowledge you need for a successful career, no matter which trade you're interested in. Our strong links with employers mean that we know which skills they are looking for and many of our students go straight into work or an apprenticeship at the end of their course.

As a construction student you'll be able to take advantage of our purpose-built construction facility, East Block One. Built across the road from our main campus, the centre has several state-of-the-art workshops which have been fitted with all the latest industry-standard equipment, enabling you to develop high level skills in your chosen discipline.



## CAREER IDEAS

PLUMBER  
BRICKLAYER  
JOINER  
SURVEYOR  
DECORATOR  
SITE CARPENTER



APPLY NOW

FOR MORE COURSE INFORMATION AND CAREER PATHWAYS VISIT:  
[WWW.CHESTERFIELD.AC.UK/CONSTRUCTION](http://WWW.CHESTERFIELD.AC.UK/CONSTRUCTION)

# COLLEGE COURSES

£33,925  
AVERAGE SALARY  
FOR PLUMBERS

## CONSTRUCTION

### BRICKLAYING

#### ENTRY TO CONSTRUCTION

ENTRY LEVEL 3 1 YEAR

This course is designed to introduce you to the numerous trades available within construction. You'll develop basic skills in carpentry, bricklaying, painting and decorating, tiling and health and safety.

**Entry Requirements:** There are no formal entry requirements.

#### CERTIFICATE IN CONSTRUCTION SKILLS (MULTISKILLS)

LEVEL 1 1 YEAR

During this course you'll develop your knowledge and practical skills to form basic woodworking joints, set out and lay bricks, apply paints to surfaces and mix and apply plaster to repair surfaces.

**Entry Requirements:** Three GCSEs at grade 3 or above.

#### DIPLOMA IN BRICKLAYING

LEVEL 1 1 YEAR

This hands-on introductory course will provide you with the skills and knowledge you need to move on to the next level of study with the aim of pursuing a career in the industry.

**Entry Requirements:** There are no formal entry requirements.

#### DIPLOMA IN BRICKLAYING

LEVEL 2 1 YEAR

During this course you'll learn how to set out brickwork, construct solid walling incorporating isolated and attached piers, and construct cavity walling forming masonry structures.

**Entry Requirements:** GCSE English and maths at grade 4 or above (or Level 2 equivalent) and a Level 1 Diploma in Bricklaying.

#### DIPLOMA IN CONSTRUCTION OPERATIONS (GROUNDWORKS)

LEVEL 2 1 YEAR

During this course you'll learn how to lay drainage, construct a manhole, lay concrete and brickwork and test drainage systems.

**Entry Requirements:** A relevant Level 1 diploma.

#### DIPLOMA IN BRICKLAYING

LEVEL 3 1 YEAR

This course includes setting out complex brick and block work, advanced trowel skills, decorative brickwork, maintaining masonry structures and the responsibilities associated with supervisory roles.

**Entry Requirements:** GCSE English and maths at grade 4 or above (or Level 2 equivalent) and a Level 2 Diploma in Bricklaying.

### CARPENTRY & JOINERY

#### CERTIFICATE IN CONSTRUCTION SKILLS (MULTISKILLS)

LEVEL 1 1 YEAR

During this course you'll develop your knowledge and practical skills to form basic woodworking joints, set out and lay bricks, apply paints to surfaces and mix and apply plaster to repair surfaces.

**Entry Requirements:** Three GCSEs at grade 3 or above.

#### DIPLOMA IN CARPENTRY AND JOINERY

LEVEL 1 1 YEAR

This is a great starting point for those who want to pursue a career as a carpenter or joiner. You'll get a solid foundation of the practical skills you need such as construction technology, building methods and how to use power tools.

**Entry Requirements:** Three GCSEs at grade 3 or above.

# COLLEGE COURSES

## CONSTRUCTION

### CARPENTRY & JOINERY

#### DIPLOMA IN BENCH JOINERY

LEVEL 2 1 YEAR

This course will develop your existing skills and knowledge, as well as introduce you to more advanced techniques. You'll learn about joinery products, advanced tool skills and how to use and maintain power tools.

**Entry Requirements:** Four GCSEs at grade 3 or above (including English or maths), or a relevant Level 1 qualification along with English or maths at grade 3 or above.

#### DIPLOMA IN SITE CARPENTRY

LEVEL 2 1 YEAR

This course will develop your knowledge and practical skills to allow you to install fitted kitchens, fix door linings and door frames, hang doors and fit associated ironmongery.

**Entry Requirements:** Four GCSEs at grade 3 or above (including English or maths), or a relevant Level 1 qualification along with English or maths at grade 3 or above.

#### DIPLOMA IN BENCH JOINERY

LEVEL 3 1 YEAR

During this course you'll develop your skills to allow you to set out, mark out and assemble door and window frames with opening sashes. You'll also operate woodwork machinery.

**Entry Requirements:** GCSE English and maths at grade 4 or above (or Level 2 equivalent) and a Level 2 Diploma in Bench Joinery.

### ELECTRICAL INSTALLATION

#### DIPLOMA IN ELECTRICAL INSTALLATION

LEVEL 1 1 YEAR

This course is ideal for anyone looking to start out in the electrical installation industry. In this beginner course you will learn the basic skills and knowledge you need to move on to the next level.

**Entry Requirements:** GCSE English and maths at grade 3 or above.

#### DIPLOMA IN ELECTRICAL INSTALLATION

LEVEL 2 1 YEAR

During this course you will get to grips with the theory and practical skills needed for a career in the electrical industry. You will not only learn basic electrical skills but you will also wire systems together and practice these skills.

**Entry Requirements:** Four GCSEs at grade 4 or above (including English, maths and science) or a relevant Level 1 qualification.

#### ADVANCED DIPLOMA IN ELECTRICAL INSTALLATION

LEVEL 3 1 YEAR

During this course you will develop your understanding of the principles, practices and legislation surrounding inspecting, testing and commissioning electrotechnical systems.

**Entry Requirements:** Level 2 Diploma in Electrical Installation.

### PAINTING & DECORATING

#### ENTRY TO CONSTRUCTION

ENTRY LEVEL 3 1 YEAR

This course is designed to introduce you to the numerous trades available within construction. You'll develop basic skills in carpentry, bricklaying, painting and decorating, tiling and health and safety.

**Entry Requirements:** There are no formal entry requirements.

#### CERTIFICATE IN CONSTRUCTION SKILLS (MULTISKILLS)

LEVEL 1 1 YEAR

During this course you'll develop your knowledge and practical skills to form basic woodworking joints, set out and lay bricks, apply paints to surfaces and mix and apply plaster to repair surfaces.

**Entry Requirements:** Three GCSEs at grade 3 or above.

#### DIPLOMA IN PAINTING AND DECORATING

LEVEL 1 1 YEAR

This is a great introductory course for those who want to pursue a career in painting and decorating. You'll need basic maths skills to work out measurements and volumes as well being creative and good with your hands.

**Entry Requirements:** There are no formal entry requirements.

#### DIPLOMA IN PAINTING AND DECORATING

LEVEL 2 1 YEAR

During this course you'll learn paint spraying techniques, how to paint with a brush and roller, and how to apply standard wallpaper and specialist decorative finishes.

**Entry Requirements:** Level 1 Diploma in Painting and Decorating.

#### DIPLOMA IN PAINTING AND DECORATING

LEVEL 3 1 YEAR

As well as building on your existing skills, this course will provide you with the knowledge of how to create specialist finishes, architectural features and how to apply hangings to walls and ceilings.

**Entry Requirements:** GCSE English and maths at grade 4 or above (or Level 2 equivalent) and a Level 2 Diploma in Painting and Decorating.

### PLUMBING

#### DIPLOMA IN PLUMBING FOUNDATION

LEVEL 1 1 YEAR

This is a great starting point for those who wish to pursue a career in plumbing. You'll learn the basic skills you need to progress to the next level of study such as the key features of domestic plumbing systems and copper, low carbon steel and plastic pipe fabrication.

**Entry Requirements:** Three GCSEs at grade 3 or above (including English or maths).

#### DIPLOMA IN PLUMBING FOUNDATION

LEVEL 2 1 YEAR

During this course you'll learn how to install and maintain a variety of plumbing systems such as hot and cold water systems, central heating systems, rainwater systems and drainage systems.

**Entry Requirements:** Level 1 Diploma in Plumbing.

#### DIPLOMA IN PLUMBING FOUNDATION

LEVEL 3 1 YEAR

This course will build on your understanding of plumbing and heating systems to provide you with in-depth knowledge of these domestic systems. You'll also learn how to carry out electrical work on plumbing and heating systems.

**Entry Requirements:** Level 2 Diploma in Plumbing.

# COLLEGE COURSES

## PROFESSIONAL CONSTRUCTION

### EXTENDED DIPLOMA IN CONSTRUCTION AND THE BUILT ENVIRONMENT

LEVEL 3 1 YEAR FULL-TIME\*

This course is designed to give you an overview of the construction industry and provide you with the skills you need for a range of roles within the sector. You'll study construction technology, surveying, health and safety, science and materials, and maths.

**Entry Requirements:** Five GCSEs at grade 4 or above (including English or maths), or a relevant Level 2 qualification. Mature learners with relevant experience will also be considered.

\*A part-time day release option is also available to be studied over 2 years.

# APPRENTICESHIPS

### ARCHITECTURAL JOINER (BENCH JOINER)

LEVEL 2 18 MONTHS

Architectural joiners will be based in workshops producing timber-based components such as doors, windows and staircases. You'll use a range of tools and materials to carry out this specialist craft.

**Entry Requirements:** There are no formal entry requirements.

### BRICKLAYER

LEVEL 2 15 MONTHS

As a bricklayer you will lay blocks, bricks and other types of building components in mortar to construct or repair structures such as walls and foundations.

**Entry Requirements:** There are no formal entry requirements.

# APPRENTICESHIPS

## CONSTRUCTION

### GROUNDWORKER

LEVEL 2 18 MONTHS

As a groundworker you'll be the first trade onto building sites. You'll work closely with supervisors and engineers to interpret design specifications and prepare the site for building works.

**Entry Requirements:** There are no formal entry requirements.

### PAINTER AND DECORATOR

LEVEL 2 36 MONTHS

Painters and decorators can work in commercial or domestic properties. You'll learn how to use a range of equipment and materials and how to apply different types of paint to walls.

**Entry Requirements:** There are no formal entry requirements.

### SITE CARPENTER

LEVEL 2 18 MONTHS

As a site carpenter you'll work on building sites to prepare and fix building components. You'll install all the necessary fixtures and fittings, as well as carrying out repair and maintenance work.

**Entry Requirements:** There are no formal entry requirements.

### ARCHITECTURAL JOINER (BENCH JOINER)

LEVEL 3 12 MONTHS

As an advanced architectural joiner you'll produce complex building components by setting out, marking out and manufacturing bespoke architectural products such as staircases, windows and doors.

**Entry Requirements:** Level 1 English and maths and a relevant Level 2 qualification.



### CONSTRUCTION/CIVIL ENGINEERING TECHNICIAN

LEVEL 3 36 MONTHS

As a construction/civil engineering technician you'll provide technical support to other construction professionals in the design, development, construction or maintenance of a built environment or infrastructure. Your work will include producing design models, analysing data and contributing to planning and managing product delivery.

**Entry Requirements:** Five GCSEs at grade 4 or above (including English and maths), or a relevant Level 2 qualification.

### GAS ENGINEERING OPERATIVE

LEVEL 3 36 MONTHS

As a gas engineering operative you will install, service and repair gas appliances such as central heating systems, cookers, industrial pipework and space heaters. This is a physical role where you might be working at height or in confined spaces.

**Entry Requirements:** Level 2 English and maths and a relevant Level 2 qualification.

### INSTALLATION ELECTRICIAN

LEVEL 3 48 MONTHS

Electricians install, test, maintain and repair electrical systems using a range of electrical equipment such as switchboards, motor, cables, fuses and thermal relays. Electricians are needed in commercial, industrial and domestic settings.

**Entry Requirements:** Maths at GCSE grade C/4 or above (or Level 2 equivalent) and English at GCSE grade D/3 or above (or Level 1 equivalent).\*

### SITE CARPENTER

LEVEL 3 12 MONTHS

As an advanced site carpenter you'll install complex and often bespoke building components such as high quality doors, shaped linings and staircases with turns. You'll also build bespoke structural carpentry including inclined roofs and joists.

**Entry Requirements:** Level 1 English and maths and a relevant Level 2 qualification.

### CONSTRUCTION SITE SUPERVISOR

LEVEL 4 36 MONTHS

As a construction site supervisor you'll ensure the health and safety of your team of specialist contractors. You'll record, control and report on the progress of projects, help monitor the costs of projects and also ensure it has minimal impact on the environment.

**Entry Requirements:** GCSE English and maths at grade 4 or above, and a relevant Level 3 qualification.

\*Please note: Students without English and maths will be expected to take these alongside their apprenticeship. Employers may also set their own entry requirements in addition to the ones outlined above.

## UNIVERSITY-LEVEL STUDY AT COLLEGE

### HNC IN CONSTRUCTION AND THE BUILT ENVIRONMENT

LEVEL 4 2 YEARS PART-TIME

Choose to study one of three pathways; civil engineering, surveying or construction. Each pathway is designed to develop your understanding of how technology is transforming the construction industry and how you can adapt and use these technologies for a successful career.

**Entry Requirements:** A relevant Level 3 qualification and GCSE English and maths at grade C/4 or above (or Level 2 equivalent). Mature learners with relevant experience will also be considered.



## BRADLEY CLARKE

*Level 2 Diploma in Bench Joinery*



"I chose to come to college to study joinery because it's something I'm really interested in. I'm a hands-on person and I wanted to do something practical, so joinery really suits me.

As part of the course we have lots of practical sessions in the workshop where we get to make a variety of products including doors, door frames and a staircase. The best thing I've made is definitely the door; I really enjoyed learning how to hinge it onto the frame too.

As part of the course we also have the opportunity to go on a work experience placement of our choice. I work part-time for a construction company so I was able to carry out my work experience there. It's been a great opportunity because I had the chance to use the skills I've learnt in joinery while also getting to grips with things such as boarding walls and painting and decorating.

I'm glad I came to college because it's a really good place to develop. Although you do get help and support from your tutors when you need it, you also have to take responsibility for your own learning which really gets you ready for working in industry. I really want to expand my skillset so I'm thinking about moving on to a Level 3 apprenticeship which will allow me to develop my skills and knowledge further."

SENIOR JOINERS  
CAN EARN  
BETWEEN £30K  
- £40K PER YEAR.

# DIGITAL TECHNOLOGIES

Digital technology shapes our everyday lives and continues to develop and change at an incredible rate. This dominant industry just continues to grow and the careers and earning potential for those interested in web and game design, multimedia, networking, programming and cyber security has never been better.

Employers across a wide range of industries need talented people with digital technology expertise and experience. At Chesterfield College, you will have access to industry-standard facilities which will prepare you for the world of work and you will be taught by tutors with extensive experience in their field.



Microsoft **Imagine Academy**  
Program member

## CAREER IDEAS

GAME DESIGNER  
MOBILE APP DEVELOPER  
SOFTWARE DEVELOPER  
SYSTEMS ENGINEER  
NETWORK ENGINEER  
NETWORK ADMINISTRATOR



APPLY NOW

FOR MORE COURSE INFORMATION AND CAREER PATHWAYS VISIT:  
[WWW.CHESTERFIELD.AC.UK/DIGITAL-TECHNOLOGIES](http://WWW.CHESTERFIELD.AC.UK/DIGITAL-TECHNOLOGIES)

# COLLEGE COURSES

£42,890  
AVERAGE SALARY  
FOR IT MANAGERS

DIGITAL  
TECHNOLOGIES

## INTRODUCTORY DIPLOMA IN INFORMATION TECHNOLOGY

LEVEL 1 1 YEAR

This course will give you an introduction to the ever changing world of computing. You will undertake a series of projects using a range of IT applications.

**Entry Requirements:** Four GCSEs at grade 1 or above (including English or maths), or a relevant Entry Level 3 qualification.

## DIPLOMA IN DIGITAL TECHNOLOGY (DIGITAL APPLICATIONS)

LEVEL 2 1 YEAR

During this course you will explore current and emerging technologies as well as learning about digital application development and IT service solutions.

**Entry Requirements:** Four GCSEs at grade 3 or above (including English or maths), or a relevant Level 1 qualification.

## DIPLOMA IN COMPUTER SCIENCE (SOFTWARE & WEB DEVELOPMENT)

LEVEL 3 2 YEARS

During this course you will develop your skills in building apps and developing websites and other programming solutions, ready for a career in roles such as scripting and app development.

**Entry Requirements:** Five GCSEs at grade 4 or above including English, maths and preferably computer science.

## DIPLOMA IN NETWORKING AND CYBER SECURITY

LEVEL 3 2 YEARS

This course has been designed to provide you with the knowledge and skills for dealing with cyber security issues and working with others to combat them. You'll also learn more about building computer systems, IT security and network vulnerabilities.

**Entry Requirements:** Five GCSEs at grade 4 or above including English, maths and preferably computer science.

## DIPLOMA IN CREATIVE MEDIA PRODUCTION (GAMES DESIGN & DEVELOPMENT)

LEVEL 3 2 YEARS

This course is ideal if you want to pursue a career in the video games industry. You'll learn core principles of video game art including 3D modelling, animation and software development.

**Entry Requirements:** Five GCSEs at grade 4 or above (including English, maths and preferably a creative subject), or a relevant Level 2 qualification.

# APPRENTICESHIPS

## INFRASTRUCTURE TECHNICIAN

LEVEL 3 15 MONTHS

An infrastructure technician provides IT support to internal and external customers to allow them to use technology in their own jobs. You'll set people up on systems and provide support when needed. You'll also solve problems and troubleshoot to rectify issues.

**Entry Requirements:** Five GCSEs at grade C/4 or above including English, maths and a science or technology subject.\*

\*Please note: Students without English and maths will be expected to take these alongside their apprenticeship. Employers may also set their own entry requirements in addition to the ones outlined above.



## ALEX MOFFAT

*HND Computer Game Design*



Alex first came to college to study a Level 3 Game Design course four years ago. He recently graduated from our University Centre with a Higher National Diploma in Creative Media Production (Computer Game Design). As well as learning key skills and getting to grips with different applications to prepare him for a career in the games and applications industry, Alex gained vital work experience in the industry.

Alex recently spent time working with award winning games studio Bossa UK. As part of the experience, he road tested games and provided vital feedback to help in the final stages of development before the game went to market. He also had the opportunity to do some 3D work for the company, which gave him the chance to learn new techniques to approach a task.

"Going to college is a great opportunity to get contacts within the industry. We have worked with a few games studios on different projects. Spending time at Bossa was really interesting. There are a lot of technical skills you have to develop on top of studying at college. Working in industry allows you to do that. It also gives you the chance to see where you can take what you are studying and build on it to open up lots of different careers."

## UNIVERSITY-LEVEL STUDY AT COLLEGE

### ACCESS TO HE COMPUTING

LEVEL 3 1 YEAR

Access course are designed to provide learners, who have been out of education for some time, the chance to gain the qualifications they need for higher level study. During this course you'll study computer systems, programming, networking and web design, to develop your understanding of the key roles available within computing.

**Entry Requirements:** GCSE English at grade C/4 or above and at least a D/3 in GCSE maths (if you have not achieved GCSE maths you will have the opportunity to take this alongside your course). You must also have relevant work experience or be willing to undertake it during your studies.

### HNC/HND IN GAME DESIGN

LEVEL 4/5 1 YEAR FULL-TIME\*

During this course you'll meet with real clients and current developers to design and create your own 2D and 3D games as part of a team. You will need to undergo a work placement in your chosen area to develop your practical skills and undertake live projects.

**Entry Requirements:** A relevant Level 3 qualification and English and maths at GCSE grade C/4 or above (or Level 2 equivalent). Mature learners with relevant experience will also be considered.

\*Additional year full-time to top up to the HND

### FOUNDATION DEGREE IN COMPUTER NETWORKS

LEVEL 4/5 2 YEARS FULL-TIME

This course covers the aspects of computing that have a practical impact on business and everyday life. You'll develop hands-on practical skills and study units such as computer and network systems, dynamic websites, database design and network servers.

**Entry Requirements:** A relevant Level 3 qualification and English and maths at GCSE grade C/4 or above (or Level 2 equivalent). Mature learners with relevant experience will also be considered.



# UNIVERSITY-LEVEL STUDY AT COLLEGE

## FOUNDATION DEGREE IN COMPUTER SOFTWARE DEVELOPMENT

LEVEL 4/5 2 YEARS FULL-TIME

This course covers the aspects of computing that have a practical impact on business and everyday life. You'll develop hands-on practical skills and study units such as software design and modelling, programming and testing, virtualisation and web applications.

**Entry Requirements:** A relevant Level 3 qualification and English and maths at GCSE grade C/4 or above (or Level 2 equivalent). Mature learners with relevant experience will also be considered.

## FULL HONOURS DEGREE IN COMPUTER NETWORKS (TOP-UP)

LEVEL 6 1 YEAR FULL-TIME

This course will provide you with the skills and knowledge you need to gain employment and develop professionally in computing. You'll study network security, wide area networks, management of IT and IS services and advanced data stores.

**Entry Requirements:** A relevant Level 5 qualification and English and maths at GCSE grade C/4 or above (or Level 2 equivalent). Mature learners with relevant experience will also be considered.

## FULL HONOURS DEGREE IN COMPUTER SOFTWARE DEVELOPMENT (TOP-UP)

LEVEL 6 1 YEAR FULL-TIME

This course will provide you with the skills and knowledge you need to gain employment and develop professionally in computing. You'll study mobile applications, interactive software, management of IT and IS services and advanced data stores.

**Entry Requirements:** A relevant Level 5 qualification and English and maths at GCSE grade C/4 or above (or Level 2 equivalent). Mature learners with relevant experience will also be considered.



## CALLUM FANSHAWE



*BSc Computer Software Development*

"I started getting into computers around the age of 14; I would build computers, do a bit of programming and even develop my own programmes such as mini games in my spare time. I first came to college after school to do a Level 3 computing qualification; after that it became clear that I wanted to pursue IT, particularly software development, at a higher level.

I then started to apply to different universities but I decided that Chesterfield College was ideally suited to me; it's local, the courses are validated by universities so you know they are high quality, and the group sizes are more manageable meaning we can have more input and support from tutors.

I decided to move on to Higher Education because it opens up so many options throughout your whole career. It's already opened up the opportunity for me to start my career in web developing at Autotrader in Manchester as part of their graduate scheme. I'll be working on their website and lots of other exciting things across the whole of their front end system.

Chesterfield College has opened up a clear path for me and what I want to go into. The course offers lots of different units, not just the practical side of computing. Through formal presentations I've been able to develop my communication skills, which really helped me with my interview at Autotrader. Overall, Chesterfield College has given me a much wider view of the industry and the opportunities available within it."



# ENGINEERING

Engineering uses maths, science and subjects such as construction and technology to improve the world around us. Engineering lies behind everything we use and consume within modern living – from your TV and mobile phone to the food you eat and the clothes you wear, the work engineers do literally surrounds us.

As an engineer, you can expect to use your creativity and problem solving skills to design new products and systems. You could work with new materials and technology to design anything from sports equipment to buildings; you can even look at ways to efficiently grow food supplies for expanding populations and how to maintain and clean water supplies. The possibilities in engineering really are endless.

We offer several different branches of engineering for those who want to specialise in a particular area and our staff have the industry experience to help you develop the skills employers are looking for.

Our tutors have a wealth of industry knowledge and as an engineering student, you'll get the chance to use a range of high-tech equipment such as electronics labs, robots, logic control software and machine labs, meaning you can get to grips with the technology you'll be using in your future career.



## CAREER IDEAS

ELECTRICAL ENGINEER  
ELECTRONIC ENGINEER  
CAD TECHNICIAN  
IT CONSULTANT

MECHANICAL ENGINEER  
MAINTENANCE ENGINEER  
WELDER  
SHEET METAL WORKER  
FABRICATOR  
MACHINIST

APPLY NOW

FOR MORE COURSE INFORMATION AND CAREER PATHWAYS VISIT:  
[WWW.CHESTERFIELD.AC.UK/ENGINEERING](http://WWW.CHESTERFIELD.AC.UK/ENGINEERING)

# COLLEGE COURSES

## ENGINEERING

### ELECTRICAL ENGINEERING

#### DIPLOMA IN PERFORMING ENGINEERING OPERATIONS (ELECTRICAL & ELECTRONIC)

LEVEL 2 1 YEAR

As technology advances the role of an electrical engineer becomes even more important. During this course you will cover topics such as electronic components, programming microchips and installing wiring.

**Entry Requirements:** Five GCSEs at grade 4 or above (including English, maths and science).

#### DIPLOMA IN ENGINEERING (ELECTRICAL)

LEVEL 3 1 YEAR

Engineers are essentially the world's problem solvers, during this course you will get to explore the roles engineers play in solving these problems. You will also have the opportunity to use your skills and knowledge to develop your own ideas.

**Entry Requirements:** Five GCSEs at grade 4 or above (including English, maths and science), or a relevant Level 2 qualification.

### MECHANICAL ENGINEERING

#### DIPLOMA IN ENGINEERING & MANUFACTURE

LEVEL 1 1 YEAR

During this course you'll cover a variety of different areas of engineering. You'll gain hands on experience learning about the maintenance of mechanical and electrical machines.

**Entry Requirements:** GCSE English, maths and science at grade 3 or above.

#### DIPLOMA IN PERFORMING ENGINEERING OPERATIONS IN MECHANICAL ENGINEERING (MANUFACTURING/MAINTENANCE)

LEVEL 2 1 YEAR

This course will provide you with a solid foundation for your engineering journey. This is a practical hands-on courses where you will use a range of mechanical equipment and components.

**Entry Requirements:** Four GCSEs at grade 4 or above including English or maths.

#### SUBSIDIARY DIPLOMA IN ENGINEERING TECHNOLOGIES

LEVEL 3 1 YEAR

This course will support the skills you have learnt on the Level 2 Performing Engineering Operations course. You'll work with a variety of specialist equipment developing your knowledge and experience.

**Entry Requirements:** Level 2 Diploma in Performing Engineering Operations in Mechanical Engineering and GCSE English and maths at grade 4 or above.

#### DIPLOMA IN ENGINEERING (MECHANICAL)

LEVEL 3 1 YEAR

Engineers are essentially the world's problem solvers, during this course you will get to explore the roles engineers play in solving these problems. You will also have the opportunity to use your skills and knowledge to develop your own ideas.

**Entry Requirements:** Five GCSEs at grade 4 or above (including English, maths and science), or a relevant Level 2 qualification.

£46,467  
AVERAGE SALARY  
FOR ELECTRICAL  
ENGINEERS

# COLLEGE COURSES

## FABRICATION & WELDING

### CERTIFICATE IN FABRICATION & WELDING

LEVEL 1 1 YEAR

This course will provide you with an introduction to fabrication and welding with the aim of providing you with the skills and knowledge you need to progress to the next level.

**Entry Requirements:** Three GCSEs at grade 1 or above.

### DIPLOMA IN PERFORMING ENGINEERING OPERATIONS (FABRICATION AND WELDING)

LEVEL 2 1 YEAR

During this course you will study theory and practical work including health and safety in the workplace, thermal cutting, platework and MAG welding allowing you to manufacture your own fabrications.

**Entry Requirements:** Four GCSEs at grade 4 or above (including English or maths).

### DIPLOMA IN FABRICATION AND WELDING

LEVEL 3 1 YEAR

During this course you will get to grips with both sheet metal and platework to create your own fabrications. You will also learn about different welding joins and processes.

**Entry Requirements:** Four GCSEs at grade 4 or above (including English and maths) and a Level 2 Diploma in Fabrication and Welding.



# APPRENTICESHIPS

## ENGINEERING

### ELECTRICAL OPERATIVE (ELECTRONICS)

LEVEL 2 15 MONTHS

Electronic engineering operatives carry out a variety of tasks which include ensuring machines and equipment are maintained and serviced, dealing with machine breakdowns, restoring components and operating a range of machinery.

**Entry Requirements:** Four GCSEs at grade C/4 or above (including English and maths).\*

### ENGINEERING OPERATIVE (FABRICATION AND WELDING)

LEVEL 2 15 MONTHS

Fabrication and welding engineering operatives carry out a range of engineering operations such as repairing and restoring components, fabricating and installing a wide variety of sheet fabrications and equipment, preparing metals and assembling metal parts using joining techniques.

**Entry Requirements:** Four GCSEs at grade C/4 or above (including English and maths).\*

### ENGINEERING OPERATIVE (MECHANICAL MAINTENANCE)

LEVEL 2 15 MONTHS

As a mechanical maintenance engineering operative you'll use diagnostic and fault finding techniques to carry out maintenance tests on a range of equipment. You'll then use your skills to repair or replace any faults.

**Entry Requirements:** Four GCSEs at grade C/4 or above (including English and maths).\*

### CIVIL ENGINEERING

LEVEL 3 36 MONTHS

As a civil engineering technician you'll provide technical support to other engineering professionals in the design, development, construction or maintenance of an infrastructure. Your work will include producing design models, analysing data and contributing to planning and managing product delivery.

**Entry Requirements:** You must have Level 1 English and maths and a relevant Level 2 qualification.\*

# APPRENTICESHIPS

## ENGINEERING TECHNICIAN (MACHINING AND MECHANICAL MANUFACTURING)

LEVEL 3 48 MONTHS

Machinists are predominantly involved in highly skilled, complex and precision work. You'll be machining components from specialist materials using a range of tools and equipment such as centre lathes, milling machines and grinding machines.

**Entry Requirements:** Four GCSEs at grade C/4 or above (including English and maths).\*

## MANUFACTURING OPERATIONS ENGINEERING TECHNICIAN

LEVEL 3 40 MONTHS

Engineering technicians are involved in highly skilled and complex work. You'll contribute to the design, development, manufacture, installation or maintenance of products, equipment, systems, processes or services.

**Entry Requirements:** Four GCSEs at grade C/4 or above (including English and maths).\*

\*Please note: Students without English and maths will be expected to take these alongside their apprenticeship. Employers may also set their own entry requirements in addition to the ones outlined above.



## HARRISON BUTTERWORTH

*Level 3 Diploma in Mechanical Engineering*

"From the minute I did BTEC engineering at school I knew it was the right subject for me, but after Year 11 I was looking for a much more practical and hands-on way to study than school could offer me at that point. I came into college to have a chat with the lecturers and it became clear that I was going to like it here. Coming to college has been one of the best things I have ever done.

So far we have developed lots of basic engineering skills, from milling and turning to hand fitting and reading drawings. The assignments at college are also a lot more flexible than what they were at school.

The tutors treat you like an adult and you can learn from their experience of working in industry too, which is great."

**£40,539**  
AVERAGE SALARY  
FOR MECHANICAL  
ENGINEERS

# UNIVERSITY-LEVEL STUDY AT COLLEGE

## HNC IN CONSTRUCTION AND THE BUILT ENVIRONMENT (CIVIL ENGINEERING)

LEVEL 4 2 YEARS PART-TIME

Choose to study one of three pathways; civil engineering, surveying or construction. Each pathway is designed to develop your understanding of how technology is transforming the construction industry and how you can adapt and use these technologies for a successful career.

**Entry Requirements:** A relevant Level 3 qualification and GCSE English and maths at grade C/4 or above (or Level 2 equivalent). Mature learners with relevant experience will also be considered.

## HNC/HND IN ELECTRICAL/MECHANICAL/ MANUFACTURING ENGINEERING

LEVEL 4/5 1 YEAR FULL-TIME\*

During this course you will investigate 3D printing, mechatronics, Stirling engines, drone technology, robotics and advanced mathematics relevant to engineering. You can also opt to pursue a specialist pathway in mechanical, electrical/electronic or general engineering in the second year.

**Entry Requirements:** A relevant Level 3 qualification and English and maths at GCSE grade C/4 or above (or Level 2 equivalent). Mature learners with relevant experience will also be considered.

\*Additional year full-time to top up to the HND.

## ENGINEERING



# KIEREN WILLIAMS



*Higher Apprenticeship in Electrical and Electronic Engineering*

"I've always wanted to work in engineering and my apprenticeship meant I could develop my experience, learn on the job and study at the same time. Everything that I've learned while doing my apprenticeship and my higher level qualification has helped me in my day to day job. My employers have been very supportive and I'm now fully qualified and have my dream job.

Completing an apprenticeship has opened doors for me. Yes, it's hard at times to study and work at the same time but it's a no brainer. Without a doubt, an apprenticeship leads to bigger things and opportunities. I'd recommend it to anyone."

£46,467  
AVERAGE SALARY  
FOR ELECTRICAL  
ENGINEERS.

# FOUNDATION STUDIES

At Chesterfield College our foundation studies courses provide the perfect start for students who have a variety of support needs, learning difficulties and/or disabilities. Our courses are designed to develop students' confidence and skills, and help them achieve their goals.



APPLY NOW

FOR MORE COURSE INFORMATION AND CAREER PATHWAYS VISIT:  
[WWW.CHESTERFIELD.AC.UK/FOUNDATION-STUDIES](http://WWW.CHESTERFIELD.AC.UK/FOUNDATION-STUDIES)



# COLLEGE COURSES



## DEVELOPING SELF (LIFE AND LIVING SKILLS)

ENTRY 1 - ENTRY 3 1 YEAR

This programme will develop the skills needed to interact and communicate with others and the environment. You'll build on your communication skills and learn how to become more independent.

Entry Requirements: No formal entry requirements are needed.

## LIFE SKILLS (LIFE AND LIVING SKILLS)

ENTRY 2 - ENTRY 3 1 YEAR

This programme develops the skills you need to live independently and access the community. You'll develop the skills you need to become more independent at home and also work towards your own personal targets.

Entry Requirements: No formal entry requirements are needed.

## MOVING ON (LIFE AND LIVING SKILLS)

ENTRY 3 - LEVEL 1 1 YEAR

This programme will develop the skills you need for employment and/or further study. You'll focus on building your learning skills which will prepare you for further study at college or employment in the workplace.

Entry Requirements: No formal entry requirements are needed.

## SUPPORTED INTERNSHIP

This course is designed to make the first steps into employment less daunting for students with additional needs. You'll learn new skills by combining your studies at college with the workplace.

Entry Requirements: No formal entry requirements are needed.

## FOUNDATION STUDIES



“

## LEWIS ALDRED

”

*Entry Level 3 Certificate in Life and Living Skills*

“For the last few months I've been taking part in the 'Tackling Inactivity in Colleges' project and I'm really enjoying it. It has helped me to become more active and I feel healthier too. Before I took part in this project I wasn't into sport at all, I literally had zero interest in it. I would just sit in my room and play video games all day, but this project has helped me to get out of bed in the morning.

As a foundation studies student, my time at college is all about developing the skills I need for the future and by taking part in this project, I'm learning new skills like working as part of a team. The tutors have been really encouraging and have helped me to get involved with lots of different sports including football, handball and tennis. So far football has definitely been my favourite.

As well as playing just for fun, we also compete in tournaments every four weeks or so against other foundation students at other colleges. During the matches I've seen people run that I never thought I would see run! The tournaments are great fun; we get to travel around playing at lots of different sports grounds.”

DEVELOP SKILLS  
NEEDED TO INTERACT  
AND COMMUNICATE  
WITH OTHERS AND THE  
ENVIRONMENT

# HAIR & BEAUTY

At Chesterfield College, we have a wide range of hair and beauty courses on offer including hairdressing, beauty therapy and media make-up artistry. As one of our students you'll study in our very own beauty salon, Looks, where you'll have the opportunity to practice your skills with your peers as well as providing treatments for paying customers in a commercial setting.

Our expert tutors have years of experience working in the industry and will help guide you to ensure you leave us with the skills and knowledge you need to excel.



## CAREER IDEAS

HAIRDRESSER

SALON OWNER

SPA THERAPIST

NAIL TECHNICIAN

MAKE-UP ARTIST

BEAUTY SALES CONSULTANT

APPLY NOW

FOR MORE COURSE INFORMATION AND CAREER PATHWAYS VISIT:  
[WWW.CHESTERFIELD.AC.UK/HAIR-AND-BEAUTY](http://WWW.CHESTERFIELD.AC.UK/HAIR-AND-BEAUTY)

# COLLEGE COURSES

£23,400  
AVERAGE SALARY  
FOR SALON  
MANAGERS

## HAIR AND BEAUTY

### DIPLOMA IN VOCATIONAL STUDIES (HAIR AND BEAUTY)

ENTRY LEVEL 1 YEAR

This introductory course will provide you with the skills and knowledge you need to progress to a Level 1 hairdressing or beauty therapy course. You will learn the basics in hair and skin care.

**Entry Requirements:** Three GCSEs at grade 1 or above.

## HAIRDRESSING

### CERTIFICATE IN HAIRDRESSING

LEVEL 1 1 YEAR

This course is a great first step for those who have a passion for hairdressing. You'll study hair styling techniques, shampooing and conditioning and blow drying. You will also assist with colouring and perming services.

**Entry Requirements:** Three GCSEs at grade 3 or above.

### TECHNICAL CERTIFICATE IN CUTTING AND STYLING TECHNIQUES

LEVEL 2 1 YEAR

This course is aimed at those who want to strengthen their cutting and styling techniques ready for a career in the hairdressing industry. You'll learn technical skills such as the principles of hairdressing, plaiting and twisting of hair, and cutting and finishing techniques.

**Entry Requirements:** Level 1 hairdressing qualification and GCSE English or maths at grade 4 or above (or Level 2 equivalent).

### TECHNICAL CERTIFICATE IN HAIR COLOURING SERVICES

LEVEL 2 1 YEAR

This course is ideal for those who want a career providing colouring and chemical services. You'll learn how to colour and lighten hair as well as styling and finishing services ready for a career in the hairdressing industry.

**Entry Requirements:** Level 2 Certificate in Cutting and Styling Techniques and GCSE English or maths at grade 4 or above (or Level 2 equivalent).

### DIPLOMA IN HAIRDRESSING

LEVEL 3 1 YEAR

This course will build on the skills you have acquired during Level 2. You'll study client consultation, colour correction and advanced colouring techniques, advanced creative cutting, bridal hair and male hair cutting techniques.

**Entry Requirements:** A relevant Level 2 qualification.

## BEAUTY

### DIPLOMA IN BEAUTY THERAPY

LEVEL 1 1 YEAR

This course will introduce you to the careers available within the beauty industry. You'll study skin care and facials, basic make up, nail art and face painting.

**Entry Requirements:** Three GCSEs at grade 1 or above.

### DIPLOMA IN BEAUTY THERAPY

LEVEL 2 1 YEAR

This course will equip you with the knowledge, practical skills and the qualification you need to enter employment in a junior role. You'll study facial skin care treatments, enhancing eyebrows and lashes, waxing services, and manicures and pedicures.

**Entry Requirements:** Three GCSEs at grade 4 or above (including English or maths), or a relevant Level 1 qualification.

### ADVANCED DIPLOMA IN BEAUTY THERAPY

LEVEL 3 1 YEAR

During this course you will build on your existing skills. You'll learn how to perform body massage treatments, electrical epilation and false tanning. This course is ideal if you intend to progress into a senior role or run your own salon.

**Entry Requirements:** A relevant Level 2 qualification.

# COLLEGE COURSES

## MAKE UP

### TECHNICAL CERTIFICATE IN MAKE UP ARTISTRY

LEVEL 2 1 YEAR

This course will provide you with the essential technical and practical skills and knowledge you need to carry out make up services in a range of industries, such as photographic studios, department stores, salons or as a freelance make up artist.

**Entry Requirements:** Three GCSEs at grade 4 or above (including English and maths).

### TECHNICAL DIPLOMA IN THEATRICAL, SPECIAL EFFECTS AND MAKE UP ARTISTRY

LEVEL 3 1 YEAR

This course covers all aspects of media make up. You will learn how to apply make up for film and television, camouflage make up techniques, fashion and photographic make up, applying prosthetic pieces, applying airbrush make up, and designing and applying face and body paint.

**Entry Requirements:** A relevant Level 2 qualification and GCSE English and maths at grade 4 or above.



# APPRENTICESHIPS

## HAIR AND BEAUTY

### HAIR PROFESSIONAL

LEVEL 2 22 MONTHS

As a hair professional you'll use a range of techniques to wash, cut, style and finish hair. You'll also work on your colouring skills and provide great customer service to all clients.

**Entry Requirements:** There are no formal entry requirements, however, applicants are expected to have a basic level of English and maths and must take a Level 2 English and maths exam prior to finishing the apprenticeship.\*

### HAIR PROFESSIONAL (BARBERING)

LEVEL 2 22 MONTHS

As a barbering professional you'll use a range of techniques to wash, cut, style and finish hair. You'll also learn how to cut facial hair into shape and how to provide shaving services.

**Entry Requirements:** There are no formal entry requirements, however, applicants are expected to have a basic level of English and maths and must take a Level 2 English and maths exam prior to finishing the apprenticeship.\*

### BEAUTY THERAPIST

LEVEL 2 18 MONTHS

As a beauty therapist you'll provide great customer service and carry out a range of beauty therapy treatments such as waxing, facials, pedicures and manicures, eyebrow and eyelash treatments, make up application and basic massages.

**Entry Requirements:** There are no formal entry requirements, however, applicants are expected to have a basic level of English and maths and must take a Level 2 English and maths exam prior to finishing the apprenticeship.\*

### ADVANCED AND CREATIVE HAIR PROFESSIONAL

LEVEL 3 15 MONTHS

As an advanced and creative hair professional you'll build on the cutting, styling and colouring techniques you learned at Level 2. You'll also be expected to work independently, managing your own time without supervision.

**Entry Requirements:** GCSE English and maths at grade C/4 or above and a relevant Level 2 qualification.\*

\*Please note: Students without English and maths will be expected to take these alongside their apprenticeship. Employers may also set their own entry requirements in addition to the ones outlined above.

# UNIVERSITY-LEVEL STUDY AT COLLEGE

## HNC/HND BUSINESS

LEVEL 4/5 1 YEAR FULL-TIME\*

Learn how to prepare for the ever changing world of business with this higher level course. You'll cover areas such as sales, retail, marketing and accountancy to really get to grips with the key aspects business owners and entrepreneurs need.

**Entry Requirements:** A relevant Level 3 qualification and English and maths (at grade C/4 or above at GCSE, or a Level 2 equivalent). Mature learners with relevant experience will also be considered.

\*Additional year full-time to top up to the HND.



## CAITLIN WILSON



*Level 3 Diploma in Theatrical, Special Effects and Media Make Up Artistry*

Caitlin Wilson says studying a media make-up course at Chesterfield College gave her access to fantastic work experience and support from industry-trained tutors. Her Level 3 qualification has allowed her to perfect the skills she needs to move on to a BA Hons in Special Effects Make-up at Bradford University. She said:

"This course has given me so many opportunities to broaden my skills and take on so many interesting challenges as a make-up artist. I've met so many different people from industry, attended beauty events, applied make-up for college stage performances and on film sets too.

I have learnt skills I never thought possible and my tutors have given me the confidence to share my work. They really support you and push you to achieve things that will help you get noticed in the industry.

I have learnt so much here and now I know I want to use my skills and do what I love working on film and TV productions in the future. I am excited to be able to develop my skills and learn more about special effects at university."

# HEALTH & SOCIAL CARE

Our courses allow you to explore a wide range of health and social care areas whilst gaining the knowledge, skills and experience you need to work in the industry. We have developed two career pathways following advice from employers and universities; a medical, nursing and midwifery pathway and a general care pathway.

All of our health and social care courses provide you with the opportunity to undertake a relevant and inspiring work placement as well as attend lessons that will develop your practical skills across areas such as working with older people and people with specific needs. We have strong links with employers in the region including local hospitals, care homes and schools so that you can use your placement to develop your employability skills in the area of your choice.



## CAREER IDEAS

NURSE

MIDWIFE

RADIOGRAPHER

HEALTH CARE ASSISTANT

PARAMEDIC

MENTAL HEALTH SPECIALIST



APPLY NOW

FOR MORE COURSE INFORMATION AND CAREER PATHWAYS VISIT:  
[WWW.CHESTERFIELD.AC.UK/HEALTH-AND-SOCIAL-CARE](http://WWW.CHESTERFIELD.AC.UK/HEALTH-AND-SOCIAL-CARE)



# COLLEGE COURSES

£45,094  
AVERAGE SALARY  
FOR MIDWIVES

## DIPLOMA IN HEALTH AND SOCIAL CARE

LEVEL 1 1 YEAR

This course will provide you with a basic understanding of the health and social care sector as well as the roles available. This is a great introduction for those who are interested in working in the care sector.

**Entry Requirements:** There are no formal entry requirements.

## CERTIFICATE IN HEALTH AND SOCIAL CARE

LEVEL 2 1 YEAR

This course is ideal for those who want to work in the health and social care sector including caring for the elderly in care homes, working with children and adults with disabilities and helping those recovering from illness or injury in a hospital or care centre.

**Entry Requirements:** Five GCSEs at grade 3 or above (including English language).

## DIPLOMA IN HEALTH AND SOCIAL CARE

LEVEL 3 2 YEARS

During this course you will study a range of units including life stage development, psychology, sociology, anatomy, physiology, nutrition and public health, to prepare you for a career in a number of specialisms such as radiography, oncology, radiotherapy, midwifery and nursing.

**Entry Requirements:** Five GCSEs at grade 4 or above (including English and maths).

# APPRENTICESHIPS

HEALTH &  
SOCIAL CARE

## ADULT CARE WORKER

LEVEL 2 13 MONTHS

As an adult care worker you'll help and support adults with care needs to achieve their own personal goals and live as independently and safely as possible.

**Entry Requirements:** There are no formal entry requirements, however, candidates without Level 1 qualifications in English and maths must achieve these and be willing to undertake a test for Level 2 before they complete their apprenticeship.\*

## HEALTHCARE SUPPORT WORKER

LEVEL 2 13 MONTHS

As a healthcare support worker you'll provide high quality compassionate care to individuals in settings such as hospitals, care homes and in the community. You may help to monitor medical conditions or assist with daily activities such as eating, drinking and washing.

**Entry Requirements:** There are no formal entry requirements, however, candidates without Level 1 qualifications in English and maths must achieve these and be willing to undertake a test for Level 2 before they complete their apprenticeship.\*

## LEAD ADULT CARE WORKER

LEVEL 3 18 MONTHS

As a lead adult care worker you will be responsible for leading other frontline workers to care for adults with additional support needs. Working at this senior level will come with added duties such as supervising a small team.

**Entry Requirements:** A relevant Level 2 qualification and experience working in a care setting. Candidates without Level 2 qualifications in English and maths must also be willing to undertake these before they complete their apprenticeship.\*

## SENIOR HEALTHCARE SUPPORT WORKER

LEVEL 3 18 MONTHS

As a senior healthcare worker you will help registered practitioners to deliver healthcare services to patients. As an experienced worker you will also be able to carry out some clinical and therapeutic tasks under supervision.

**Entry Requirements:** A relevant Level 2 qualification and experience working in a care setting. Candidates without Level 2 qualifications in English and maths must also be willing to undertake these before they complete their apprenticeship.\*

# APPRENTICESHIPS

## DENTAL NURSE

LEVEL 3 18 MONTHS

As a dental nurse you will provide chair-side support to dental professionals and deliver high quality patient care. You'll gain knowledge of dental anatomy and advise patients on oral care and hygiene.

**Entry Requirements:** GCSE English and maths at grade C/4 or above and a relevant Level 2 qualification.\*

\*Please note: Students without English and maths will be expected to take these alongside their apprenticeship. Employers may also set their own entry requirements in addition to the ones outlined above.

## UNIVERSITY-LEVEL STUDY AT COLLEGE

### ACCESS TO HIGHER EDUCATION DIPLOMA IN HEALTH

LEVEL 3 1 YEAR FULL-TIME

Access courses are designed to provide learners, who have been out of education for some time, the chance to gain the qualifications they need for higher level study. During this course you'll focus on psychology, biology and sociology to prepare you for careers in nursing, midwifery and occupational therapy.

**Entry Requirements:** GCSE English at C/4 or above, GCSE Maths at grade D/3 (learners with a D/3 in maths will need to retake maths alongside their course). All relevant work experience will also be considered.

### FOUNDATION DEGREE IN PROFESSIONAL PRACTICE IN HEALTH AND SOCIAL CARE

LEVEL 4-5 2 YEARS FULL-TIME

This work-based qualification is designed for those who are looking to go into a wide range of roles across the health, social and community care sectors. It combines health and social care education with the practical skills you will gain through employment or a work experience placement.

**Entry Requirements:** A relevant Level 3 qualification and English and maths at GCSE grade C/4 or above (or Level 2 equivalent). Mature learners with relevant experience will also be considered.



## ELOISE HEATHCOTE



**Foundation Degree in Professional Practice in Health & Social Care**

"When I finished my Level 3 health and social care course at college I decided that going to university was too big of a leap for me and I wasn't ready for that. I decided to study a university-level course at college because I thought it would ease me in to higher-level study.

Studying at college has been great. The class sizes are much smaller than university which meant I found it a lot easier to access support services and one-to-one time with my tutors.

When I started this course I originally wanted to be a social worker but after going on placements as part of the foundation degree, I soon realised there were a lot more job roles available and discovered I was actually more suited to counselling.

I'm now at the University of Derby studying a full honours degree in Counselling Psychotherapy. The foundation degree at college gave me more time to decide what I wanted to do and I think I'm a more efficient learner because I enjoy what I'm studying.

I think if you're a bit apprehensive about university, like I was, then I would definitely recommend coming to Chesterfield College. The courses here are really varied with lots of different pathways available which is really good for someone who knows what field they want to work in but not necessarily which profession."

399 YOUTH WORKERS ARE EMPLOYED IN THE CHESTERFIELD REGION

# HOSPITALITY & CATERING

Our hospitality and catering courses will give you the skills you need to succeed in this demanding and dynamic industry. Whether you want to be front of house or work in a professional kitchen, you'll benefit from the expertise of our tutors who have years of experience working in fine dining restaurants and hotels.

You will be able to practice your skills and get hands-on experience working in our industry-standard kitchens and onsite restaurant, Taste. You'll also get the chance to cook and serve food to paying customers during the week. This will give you the opportunity to experience what it's like to work in the industry and benefit from being part of a professional team in a customer-facing environment.



## CAREER IDEAS

CHEF

PASTRY CHEF

DIETICIAN

FRONT OF HOUSE MANAGER

BAR SUPERVISOR

EVENT MANAGER



APPLY NOW

FOR MORE COURSE INFORMATION AND CAREER PATHWAYS VISIT:  
[WWW.CHESTERFIELD.AC.UK/HOSPITALITY-AND-CATERING](http://WWW.CHESTERFIELD.AC.UK/HOSPITALITY-AND-CATERING)

### CERTIFICATE IN AN INTRODUCTION TO THE HOSPITALITY INDUSTRY

ENTRY LEVEL 3 1 YEAR

During this introductory course you will learn the basic skills you need to work in the food and drink industry. You will learn food and drink serving skills, food preparation and essential knife skills.

**Entry Requirements:** There are no formal entry requirements.

### CERTIFICATE IN FOOD PREPARATION AND COOKING

LEVEL 1 1 YEAR

This course is a great starting point if you want a career working in the food and hospitality industry. You'll study food hygiene, securing working environments, how to prepare and cook food, and how to store food safely.

**Entry Requirements:** Four GCSEs at grade 1 or above.

### DIPLOMA IN HOSPITALITY SERVICES

LEVEL 2 1 YEAR

Hospitality is all about delivering great customer service whilst serving food and drink. During this course you'll develop a range of useful skills such as reception and customer service, housekeeping, and food and beverage service.

**Entry Requirements:** Three GCSEs at grade 4 or above (including English or maths), or a relevant Level 1 qualification.

### DIPLOMA IN PROFESSIONAL COOKERY

LEVEL 2 1 YEAR

During this course you will learn the cookery skills you'll need to work in a professional kitchen. As well as learning how to prepare and cook food, you'll also study menu design, how to handle knives and food safety.

**Entry Requirements:** Three GCSEs at grade 4 or above, or a relevant Level 1 qualification.

### DIPLOMA IN HOSPITALITY SUPERVISION AND LEADERSHIP

LEVEL 3 1 YEAR

This course is designed to prepare you for a career in a managerial role within the hospitality industry. You will learn how to lead a team to improve customer service, develop working relationships with colleagues and maintain health, hygiene and safety within the workplace.

**Entry Requirements:** A relevant Level 2 qualification in hospitality or catering.

### DIPLOMA IN ADVANCED PROFESSIONAL COOKERY

LEVEL 3 1 YEAR

This course will build on your existing cookery skills and take you to the next level. You will learn how to prepare and cook complex dishes using a range of techniques used in high end restaurants. You'll use your skills to cook food for paying customers in our very own Taste restaurant.

**Entry Requirements:** A relevant Level 2 qualification in hospitality or catering.





## JAMES GREATOREX



*Level 3 Diploma in Professional Cookery*

Just four years after completing his studies at Chesterfield College, James Greatorex's career has gone from strength to strength. James is now working as Head Chef at Michelin-starred restaurant, L'Ortolan.

He said: "It is a real honour for me to be offered the Head Chef position at L'Ortolan, a place with such a rich culinary history, developed through a series of many talented chefs who have worked there. With a strong team behind me, I hope to consolidate L'Ortolan's rightful place within England's fine dining scene."

James' former tutor at college said: "James has done amazingly well. He is a talented chef who was always eager to learn and develop his skills to a very high standard. We are not surprised that his talent and ambition has got him where he is today. He has had an amazing career since leaving us and we are all very proud of his achievements."



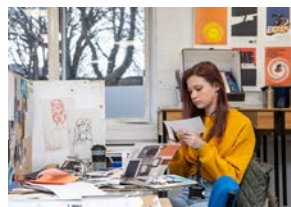
**£26,686**  
AVERAGE SALARY  
FOR EXPERIENCED  
CHEFS

# MEDIA & GRAPHIC DESIGN

Our media courses give you the opportunity to develop skills in cinematography, sound recording and post-production editing across a range of genres. During your time here you'll also be able to produce your own short films, posters, adverts, music videos and much more, to really build your portfolio.

Our graphic design courses will allow you to explore a range of different skills and techniques such as design principles, visual and graphic language, typography and digital image making, to help you expand your creative approach as a designer. The projects you'll be working on will be very much led by you and what you're interested in.

At Chesterfield College we have excellent facilities including a range of full-size video cameras, audio recording and lighting kits, camera stabilisers, Mac editing suits, and much more. With the latest software and technology, you can really get to grips with the equipment you'll be using if you continue onto a career in media or graphic design.



## CAREER IDEAS

TV/FILM PRODUCER  
CAMERA TECHNICIAN  
GRAPHIC DESIGNER  
ANIMATOR  
APP DEVELOPER  
SOUND ENGINEER



APPLY NOW

FOR MORE COURSE INFORMATION AND CAREER PATHWAYS VISIT:  
[WWW.CHESTERFIELD.AC.UK/MEDIA-AND-GRAPHICS](http://WWW.CHESTERFIELD.AC.UK/MEDIA-AND-GRAPHICS)



# COLLEGE COURSES

£30,410  
AVERAGE SALARY  
FOR CAMERA  
OPERATORS

## DIPLOMA IN ART AND MEDIA

LEVEL 1 1 YEAR

This introductory course will provide you with a solid foundation to develop your skills and understanding within the art, design and media industries. You'll develop practical skills across multiple disciplines.

**Entry Requirements:** Four GCSEs at grade 1 or above (including English or maths), or a relevant Entry-Level 3 qualification.

## DIPLOMA IN CREATIVE MEDIA PRODUCTION AND TECHNOLOGY

LEVEL 2 1 YEAR

This course will introduce you to both the creative and technical aspects of media production. You'll study film, TV, special effects, animation, photography, editing, sound and lighting to prepare you for a career in the media industry.

**Entry Requirements:** Four GCSEs at grade 3 or above (including English or maths), or a relevant Level 1 qualification.

## DIPLOMA IN TV, FILM AND VISUAL EFFECTS

LEVEL 3 2 YEARS

This course will allow you to explore and develop your creativity. You'll focus on media production for film and TV, and develop skills using cameras, lighting and sound. You'll also get to grips with editing and special effects whilst working on live project briefs.

**Entry Requirements:** Five GCSEs at grade 4 or above (including English, maths and a creative subject), or a relevant Level 2 qualification.

## DIPLOMA IN GRAPHIC DESIGN

LEVEL 3 2 YEARS

During this course you will develop a range of design skills and techniques whilst developing your understanding of design principles, including visual and graphic language, typography and communication, digital image making and more.

**Entry Requirements:** Five GCSEs at grade 4 or above (including English or maths), or a relevant Level 2 qualification.

# APPRENTICESHIPS

MEDIA AND  
GRAPHIC DESIGN

## DIGITAL MARKETER

LEVEL 3 18 MONTHS

As a digital marketer you will design, build and implement digital campaigns across a variety of online and social media platforms to build customer relationships.

**Entry Requirements:** GCSE English and maths at grade C/4 or above and a relevant Level 2 qualification.\*

\*Please note: Students without English and maths will be expected to take these alongside their apprenticeship. Employers may also set their own entry requirements in addition to the ones outlined above.

# UNIVERSITY-LEVEL STUDY AT COLLEGE

## HNC/HND IN GAME DESIGN

LEVEL 4/5 1 YEAR FULL-TIME\*

During this course you'll meet with real clients and current developers to design and create your own 2D and 3D games as part of a team. You'll need to undergo a work placement in your chosen area to develop your practical skills and undertake live projects.

**Entry Requirements:** A relevant Level 3 qualification and English and maths at GCSE grade C/4 or above (or Level 2 equivalent). Mature learners with relevant experience will also be considered.

\*Additional year full-time to top up to the HND.

50% OF  
GRAPHIC DESIGNERS  
HAVE A LEVEL 6  
QUALIFICATION



## **BEN RAMSDALE**



*Level 3 Extended Diploma in Creative Media Production*

Ben Ramsdale's sports journalism career is off to a great start. Since leaving college he has graduated from a sports journalism course at university, taken part in a BBC 'Kick Off' scheme to develop talented future reporters, and is already working freelance for the BBC and West London Sport. He has also created his own American Football website and podcast which is proving popular with UK fans.

Ben's ultimate goal is to become a well-respected sports editor with an excellent reputation for good journalism. His route to success so far has been built on his passion for sport, his flair and creativity for editing and his excellent networking skills. He has taken every opportunity that has come his way to make a name for himself and, so far, it has been a winning formula.

He told us:

"I chose to study media at college because I wanted to do something creative. I didn't really know what I wanted to do at that stage but in a way I had always liked the idea of presenting on TV or radio. My days at college helped me to develop good editing skills. I also learnt a lot about the industry from the media professionals who teach on the course. To this day, when I edit video and audio I know those are skills I learnt at college and it was definitely my favourite part of the course. Having those skills definitely helped me to get started and make a good first impression in the media industry.

Work experience counts for so much in this industry and college does prepare you for that because it is more like a working environment than school is. The sooner you can get out there and show what you can do and make connections the better. Take every opportunity that comes your way, you never know where it can lead."



# MUSIC

If you have a passion for music then our brand new music production courses are for you! We are in the process of building a new music facility within Chesterfield College, for our talented musicians and producers to use.

All of our music courses offer a range of activities essential to the development and delivery of music performance and production such as composition, listening skills, the process of rehearsal, technology and delivery of a music performance and production as a collaborative activity.



## CAREER IDEAS

BROADCASTING SOUND  
TECHNICIAN

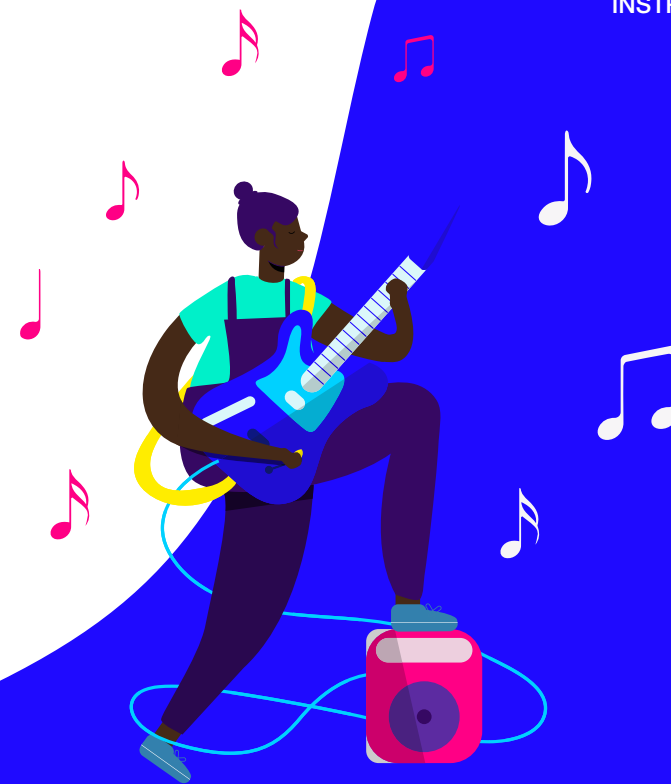
LIVE OR STUDIO SOUND  
ENGINEER

INSTRUMENT TECHNICIAN

MUSIC PRODUCER

MUSICIAN

AUDIO EDITOR



APPLY NOW

FOR MORE COURSE INFORMATION AND CAREER PATHWAYS VISIT:  
[WWW.CHESTERFIELD.AC.UK/MUSIC](http://WWW.CHESTERFIELD.AC.UK/MUSIC)

# COLLEGE COURSES

£38,522  
AVERAGE SALARY  
FOR MUSICIANS

## DIPLOMA IN MUSIC

LEVEL 1 1 YEAR

This course is designed to provide you with the opportunity to explore some of the methods, materials and processes used to support many music, performance and production activities. You will learn basic music technology skills to build a foundation of knowledge, ready to progress onto the next level.

**Entry Requirements:** Four GCSEs at grade 1 or above (including English or maths) and a strong passion and interest in music.

## DIPLOMA IN MUSIC

LEVEL 2 1 YEAR

During this course you will learn a range of skills essential to the development and delivery of music performance and production, such as composition, listening skills, the rehearsal process and collaborative delivery of music performance and production.

**Entry Requirements:** Four GCSEs at grade 3 or above (including English and maths) and a digital music portfolio.

## DIPLOMA IN MUSIC

LEVEL 3 2 YEARS

During this course you will undertake a series of live projects working for real clients, using industry-standard technology such as a digital sequencer and much more. You will also have the opportunity to participate in live sound production to prepare you for a career in the music industry.

**Entry Requirements:** Five GCSEs at grade 4 or above (including English and maths) and a digital music portfolio.

£39,125  
AVERAGE  
SALARY FOR  
MUSIC  
PRODUCERS

MUSIC

NEW  
*music*  
FACILITIES  
COMING SOON!



# PERFORMING ARTS

As a performing arts student you'll receive an-all round education by developing skills and knowledge in a range of performing arts specialisms.

At Chesterfield College, you'll have access to an in-house studio theatre, dance space and costume and props store; our tutors all come from a professional background meaning you'll be well-prepared when starting your own career.

Our courses offer many exciting performance opportunities including pantomimes and plays, which will help to build your confidence, enhance your skills and prepare you for drama school or a university-level course.



## CAREER IDEAS

PERFORMER

SINGER

DANCER

ACTOR

ENTERTAINER

CHOREOGRAPHER



APPLY NOW

FOR MORE COURSE INFORMATION AND CAREER PATHWAYS VISIT:  
[WWW.CHESTERFIELD.AC.UK/PERFORMING-ARTS](http://WWW.CHESTERFIELD.AC.UK/PERFORMING-ARTS)

# COLLEGE COURSES

£38,522  
AVERAGE SALARY  
FOR DANCERS AND  
CHOREOGRAPHERS

## TECHINICAL DIPLOMA IN PERFORMING ARTS

LEVEL 2 1 YEAR

During this course you'll develop the knowledge and skills you need to complete realistic projects and activities required of a modern performer. You'll delve into the performing arts industry and study acting, scripted plays, musical theatre and performance design.

**Entry Requirements:** Four GCSEs at grade 2 or above, or a relevant Level 1 qualification.

## DIPLOMA IN PERFORMING ARTS AND PRODUCTION

LEVEL 3 2 YEARS

This course is designed to provide you with a broad understanding of different acting and performance techniques. You'll study key units including performing to an audience, principles of acting, musical theatre performance, dance, and TV and film acting.

**Entry Requirements:** Four GCSEs at grade 4 or above (including English, maths and preferably a creative subject), or a relevant Level 2 qualification.

# UNIVERSITY-LEVEL STUDY AT COLLEGE

## HNC IN PERFORMING ARTS

LEVEL 4 1 YEAR FULL-TIME\*

This course will equip you with the skills you need to become a performance practitioner. You will develop your professional practice and improve your movement, acting and singing skills while also learning about creative arts research, workshop leadership and how to create exciting performances.

**Entry Requirements:** An audition (two minute contemporary monologue), a relevant Level 3 qualification and English and maths at GCSE grade C/4 or above (or Level 2 equivalent). Mature learners with relevant experience will also be considered.

\*Part-time options also available to be studied over two years.

# PERFORMING ARTS



“

## MATT PARKER

Level 3 Performing Arts

”

“The two years I spent at college were worth every minute! It taught me an awful lot about the performing arts industry, what is involved in getting work as an actor/performer and a lot about the different styles and practitioners. This was extremely helpful for me as it broadened my knowledge on all things performing arts, and certainly helped me get where I am now. We also had guest speakers come in and share their personal experiences in the industry.

The course itself is brilliant, but what's really invaluable are the opportunities you are given throughout. An example of this is the Chesterfield College cinema advert I starred in which was offered as an open audition to our year, and I got the role! The tutors are lovely, and will definitely push you in the right direction to achieve your potential.

My college course supplied me with exactly what I needed to get into the course I wanted at the East 15 Acting School based at the University of Essex. We had loads of audition prep lessons which really assisted me when picking which speeches to audition with and how I should perform them. They also helped me achieve top grades overall at the end of my second year, which were an added bonus to help me when applying for the course.”

£31,429

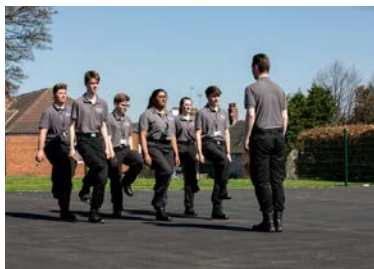
AVERAGE SALARY  
FOR ACTORS AND  
ENTERTAINERS



# PUBLIC SERVICES

A Public Services course at college will give you the skills, experience and knowledge you need to pursue a career in the police, fire and ambulance services, as well as the armed forces and civil services. During the course you'll develop confidence, resilience and the technical skills you need for a variety of career opportunities.

We have strong links with the armed forces, police and fire service to provide you with a real hands-on experience and the essential understanding of the sector you need to start your career.



## CAREER IDEAS

POLICE CONSTABLE

FIRE AND RESCUE

PROBATION OFFICER

ARMY

NAVY

RAF



APPLY NOW

FOR MORE COURSE INFORMATION AND CAREER PATHWAYS VISIT:  
[WWW.CHESTERFIELD.AC.UK/PUBLIC-SERVICES-COURSES](http://WWW.CHESTERFIELD.AC.UK/PUBLIC-SERVICES-COURSES)

# COLLEGE COURSES

£37,829  
AVERAGE SALARY  
FOR ROYAL  
MARINES

## DIPLOMA IN VOCATIONAL STUDIES - SPORT AND PUBLIC SERVICES

LEVEL 1 1 YEAR

This course will support your progression onto a Level 2 sport or public services course. If you like practical activities then this course will suit you. You'll study healthy lifestyles, participating in sport and improving personal fitness.

**Entry Requirements:** Four GCSEs at grade 1 or above (including English or maths).

## DIPLOMA FOR ENTRY TO THE UNIFORMED SERVICES

LEVEL 2 1 YEAR

If you're interested in a career in the uniformed services then this course is for you. You'll learn more about the different services available and the roles within them. You'll also get to grips with the level of physical fitness required for the services and develop team work and problem-solving skills.

**Entry Requirements:** Four GCSEs at grade 3 or above (including English or maths), or a relevant Level 1 qualification.

## DIPLOMA IN PUBLIC SERVICES (ARMED FORCES AND EMERGENCY SERVICES)

LEVEL 3 2 YEARS

During this course you'll have the opportunity to experience public services first hand through industry talks, guest speakers and residential trips. You'll also have the chance to volunteer with some services to develop the employability skills you need. The Armed Forces pathway will prepare you for a career in the RAF, Army, Royal Navy, Royal Marines, Military Police and Fire Service.

**Entry Requirements:** Five GCSEs at grade 4 or above (including English and maths), or a relevant Level 2 qualification.

# UNIVERSITY-LEVEL STUDY AT COLLEGE

PUBLIC  
SERVICES

## ACCESS TO HE - POLICING AND CRIMINOLOGY

LEVEL 3 1 YEAR

Access courses are designed to provide learners, who have been out of education for some time, the chance to gain the qualifications they need for higher level study. During this course you will develop the skills and knowledge you need to progress onto further study in the public services. You'll study crime prevention and control, criminology, forensic science, police powers and the causes of crimes.

**Entry Requirements:** GCSE English at grade C/4 or above and at least a D/3 in GCSE maths (if you have not achieved GCSE maths you will have the opportunity to take this alongside your course). You must also have relevant work experience or be willing to take this alongside your studies.

## HNC/HND IN PUBLIC SERVICES

LEVEL 4/5 1 YEAR FULL-TIME \*

This course is designed to give you the skills required to pursue a career in the public services, whether uniformed or non-uniformed. You'll look at criminal behaviour, law and justice and emergency planning, as well as gaining an in-depth knowledge of the public sector.

**Entry Requirements:** A relevant Level 3 qualification and English and maths at GCSE grade C/4 or above (or Level 2 equivalent). Mature learners with relevant experience will also be considered.

\* Additional year full-time to top up to the HND.

“

”

## ELLIE ANDERTON-BROWN

*HND in Public Services*

"I'd always planned to go straight into the Army after leaving school, however, I decided to come to college to keep my options open and I'm so glad I did. I first enrolled onto a Level 3 Public Services course which introduced me to the wide range of roles available within the sector. I soon realised that I wanted to join the police force but discovered that you now need a degree to do so. My tutors encouraged me to continue studying at college and progress to the university-level public services course.

Studying at college has been great. I've met lots of different people here and made some amazing new friends. When I first started I was a really quiet person, but I've massively developed in confidence which is really going to help me in my future career.

I volunteer with the Criminal Investigation Department as part of Derbyshire Police's Support Scheme, which has been a fantastic experience and a real eye opener when it comes to learning more about policing. I actually used the work I was doing as part of my HND for my application. Getting accepted into the police is a really lengthy process but there's no doubt in my mind that the skills I've learned at college have given me the edge to stand out. I'm now going to 'top up' my HND to a full honours degree and once I've passed a couple more fitness tests I'm hoping to secure my position with Derbyshire Police next year."



290 POLICE  
OFFICERS (SERGEANT  
AND BELOW) ARE  
EMPLOYED IN THE  
CHESTERFIELD  
REGION

# SPORT

Our sports courses have been designed to give you the skills that employers demand, such as team work, time management, leadership and communication. You'll have the opportunity to develop transferable skills for employment and further study in whichever sporting career you choose.

As a Chesterfield College sport student you'll also have access to our superb leisure facility at Queen's Park. With an eight-lane swimming pool, 80-station gym, squash courts and a freedom climbing wall, you'll have plenty of opportunities to work on your practical skills as well as your coaching and development techniques.



## CAREER IDEAS

PERSONAL TRAINER  
FITNESS INSTRUCTOR  
SPORTS THERAPIST  
PHYSIOTHERAPIST  
SPORTS COACH  
PE TEACHER



APPLY NOW

FOR MORE COURSE INFORMATION AND CAREER PATHWAYS VISIT:  
[WWW.CHESTERFIELD.AC.UK/SPORT](http://WWW.CHESTERFIELD.AC.UK/SPORT)

£23,171  
AVERAGE SALARY  
FOR SPORT  
COACHES

### DIPLOMA IN VOCATIONAL STUDIES - SPORT AND PUBLIC SERVICES

LEVEL 1 1 YEAR

This course will support your progression onto a Level 2 sport or public services course. If you like practical activities then this course will suit you. You'll study healthy lifestyles, participating in sport and improving personal fitness.

**Entry Requirements:** Four GCSEs at grade 1 or above including English or maths.

### DIPLOMA IN INSTRUCTING EXERCISE AND FITNESS

LEVEL 2 1 YEAR

This course is designed to provide you with the skills and knowledge you need to deliver group exercise and fitness programmes. You'll study the principles of training, anatomy and physiology and also learn how to deliver exercise to music sessions.

**Entry Requirements:** Four GCSEs at grade 3 or above (including English or maths), or a relevant Level 1 qualification.

### DIPLOMA IN SPORT

LEVEL 2 1 YEAR

During this course you'll learn the introductory skills you need for a career in sport. You'll have the opportunity to develop your coaching skills and learn about the skills and tactics needed for a range of sports so that you can plan and deliver coaching sessions.

**Entry Requirements:** Four GCSEs at grade 3 or above (including English or maths), or a relevant Level 1 qualification.

### DIPLOMA IN PERSONAL TRAINING

LEVEL 3 1 YEAR

If you have a passion for physical activity, exercise and interacting with people then this course is for you. You'll get to grips with the knowledge and skills you need to work unsupervised as a personal trainer in the sport and leisure industry.

**Entry Requirements:** Level 2 Diploma in Exercise and Fitness, and a Level 2 English and maths qualification.

### DIPLOMA IN SPORT

LEVEL 3 2 YEARS

This course will cover the fundamentals of sport coaching. You'll learn about the role fitness training and programming plays in successful coaching environments and the importance of fitness testing. You'll also learn more about sport injuries and how they can be managed through nutrition and rehabilitation.

**Entry Requirements:** Five GCSEs at grade 4 or above (including English and science), or a relevant Level 2 qualification.

### DIPLOMA IN SPORT AND EXERCISE

LEVEL 3 2 YEARS

This course will cover the fundamentals of sport and exercise science. You'll build on your knowledge of anatomy and physiology and how they link to movement. You'll also learn more about the psychology surrounding coaching and how to assess and manage sporting injuries through the use of nutrition, recovery and performance.

**Entry Requirements:** Five GCSEs at grade 4 or above (including English and maths), or a relevant Level 2 qualification.

### DIPLOMA IN SPORT AND PHYSICAL ACTIVITY (DERBY COUNTY FC ELITE FOOTBALL ACADEMY)

LEVEL 3 1 YEAR

If you're interested in playing competitive football at an elite level then this course is designed for you. You'll be one of 20 players competing in an elite league against teams such as Aston Villa, Nottingham Forest and Leicester City.

**Entry Requirements:** Four GCSEs at grade 4 or above (including English or maths), or a relevant Level 2 qualification. The football club will also require you to undergo a trial.



# UNIVERSITY-LEVEL STUDY AT COLLEGE

## FOUNDATION DEGREE IN **SPORT COACHING**

**LEVEL 4-5   2 YEARS FULL-TIME**

This course is designed to prepare you for a career as a professional sports coach. Whether you want to work in performance, participation, in schools, governing bodies, professional sports clubs or commercial activity settings, the course aims to challenge and support your development to be the best sports coach you can be.

**Entry Requirements:** A relevant Level 3 qualification and English and maths at GCSE grade C/4 or above (or Level 2 equivalent). Mature learners with relevant experience will also be considered.

186

FITNESS INSTRUCTORS  
ARE EMPLOYED IN THE  
CHESTERFIELD REGION



## CHRISTIAN SAVAGE

*Foundation Degree in Sports Coaching*



"I chose to study for my degree at college rather than going to university because of the convenience. It was a lot easier to apply, it's cheaper, I already knew the tutors from my previous course and I have really enjoyed my past experience at college. The whole thing has felt a lot more personable than university. The tutors have been absolutely fantastic; they have gone above and beyond to make sure we were gaining the skills and experience necessary for our careers. I feel that the tutors have fully prepared me for the working world. They are really approachable, it's not like a normal student-teacher relationship; they treat you as a friend and as an equal.



The course has provided me with much more than just sports coaching skills; I learned a lot of academic skills too. For example, I would now feel comfortable to have an informed debate on a number of subject areas, something which I would never have done before I started this course. After completing the foundation degree I did a 'top-up' to a full honours degree and I'm now studying for a PGCE at Sheffield Hallam University. I decided to take this route because I work as a sports coach part-time and I love working with young children, so I want to focus on Primary Education.

From working with young children in my sports coaching role and going on placements as part of my course, I've seen first-hand how undervalued physical education is in primary schools; a lot of teachers don't feel confident enough to teach the subject so children are missing out.



# TRAVEL & TOURISM

Studying travel and tourism at Chesterfield College opens up an exciting variety of careers from cabin crew and travel agent, to events planner and cruise line manager. All of our courses have been designed to help you develop the skills that employers will be looking for, giving you the best chance in your career after college.

Every year our travel and tourism students have the opportunity to visit different companies and listen to guest lecturers from industry, giving them a taste of how leading venues and organisations operate.



## CAREER IDEAS

CABIN CREW

TRAVEL AGENT

RESORT MANAGER

TOURISM PLANNING OFFICER

HOTELIER

EVENTS OFFICER



APPLY NOW

FOR MORE COURSE INFORMATION AND CAREER PATHWAYS VISIT:  
[WWW.CHESTERFIELD.AC.UK/TRAVEL-AND-TOURISM](http://WWW.CHESTERFIELD.AC.UK/TRAVEL-AND-TOURISM)

# COLLEGE COURSES

£27,165  
AVERAGE SALARY  
FOR TRAVEL  
AGENTS

## CERTIFICATE IN BUSINESS AND TRAVEL

LEVEL 1 1 YEAR

This course is ideal if you're planning a career in business or travel but aren't quite ready to study a Level 2 programme. You will learn important skills such as being organised and working with others.

**Entry Requirements:** Four GCSEs at grade 1 or above.

## CERTIFICATE IN TRAVEL AND TOURISM

LEVEL 2 1 YEAR

This course is designed to provide you with an understanding of the principles of travel and tourism and will allow you to explore the different careers available within the industry. You'll develop your customer service skills and learn about airlines and airports as well as how to give guided tours.

**Entry Requirements:** Three GCSEs at grade 4 or above (including English or maths).

## DIPLOMA IN TRAVEL AND TOURISM

LEVEL 3 2 YEARS

During this course you will study the tourism industry in-depth. You'll learn all about UK tourism such as heritage sites, attractions and tour operators. You'll also branch out to worldwide travel, exploring airlines and cabin crew roles as well as resort representatives and management.

**Entry Requirements:** Five GCSEs at grade 4 or above (including English and maths), or a relevant Level 2 qualification.

## TRAVEL & TOURISM



## ABBIE WOLSTENHOLME

*Level 3 Diploma in Travel and Tourism*

"I chose to study travel and tourism because I wanted to work overseas or as cabin crew, and the college study programme gave me a great insight into both jobs and how to work towards them.

As part of my study programme I was able to visit numerous tourist attractions, such as the Tate Modern in Liverpool, and I was also given the opportunity to apply for jobs at local attraction parks which provides great industry and interview experience. My tutors were really helpful throughout my time at college. They supported me through my studies and also helped me when applying for jobs at airlines.

I've always wanted to work as cabin crew because I wanted to travel the world and work at the same time. After being rejected by some local airlines I decided to apply to work for British Airways at Heathrow. It was a lengthy interview and reference process which was both intense and fun at the same time! I was then offered the job which I accepted immediately.

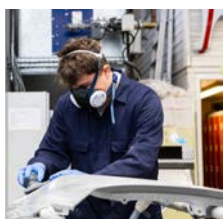
The best thing about my job is exploring the world and getting paid to do it. I work with so many people from different backgrounds and cultures which makes it really fun and exciting. My favourite place has to be Los Angeles, it has an amazing vibe. I hired a Mustang and drove through Hollywood and Beverly Hills. I've met lots of celebrities on the flights to LAX which is always really exciting."

£20,779  
AVERAGE SALARY  
FOR CABIN CREW

# VEHICLE ACCIDENT REPAIR & REFINISHING

Our range of vehicle accident repair courses are designed to give you the skills you need to become a qualified vehicle refinishing technician. You'll be trained to work with the latest technologies in our simulated workshop environment alongside our industry trained tutors.

Courses at all levels give you hands-on, practical experience working with the latest vehicle technology, which is invaluable when entering full-time employment. At Chesterfield College, we benefit from strong links with a number of employers in the vehicle accident repair sector, which enables us to understand the skills and attributes they are looking for.



## CAREER IDEAS

VEHICLE ACCIDENT REPAIR  
TECHNICIAN

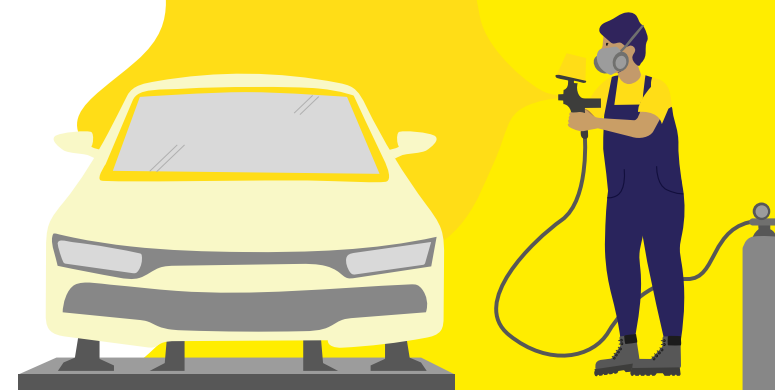
VEHICLE PAINT REPAIR  
TECHNICIAN

WORKSHOP SUPERVISOR

ESTIMATOR

BODY SHOP MANAGER

VEHICLE DAMAGE ASSESSOR



APPLY NOW

FOR MORE COURSE INFORMATION AND CAREER PATHWAYS VISIT:  
[WWW.CHESTERFIELD.AC.UK/AUTOMOTIVE-COURSES](http://WWW.CHESTERFIELD.AC.UK/AUTOMOTIVE-COURSES)

# COLLEGE COURSES

£22,069  
AVERAGE SALARY  
FOR VEHICLE BODY  
REPAIR TECHNICIANS

## VEHICLE ACCIDENT REPAIR & REFINISHING

### CERTIFICATE IN VEHICLE ACCIDENT REPAIR

LEVEL 1 1 YEAR

This introductory course will provide you with the skills and knowledge you need to progress onto the next level of study. You'll learn the basics of vehicle body repair, develop welding skills and gain experience in vehicle paint application.

**Entry Requirements:** There are no formal entry requirements.

### DIPLOMA IN VEHICLE ACCIDENT REPAIR AND PAINT PRINCIPLES

LEVEL 2 1 YEAR

During this course you will gain the technical skills you need for a career in the vehicle paint repair industry. You'll learn how to use a number of vehicle refinishing tools to carry out paint application techniques.

**Entry Requirements:** There are no formal entry requirements, however, learners are strongly advised to have completed a relevant Level 1 qualification.

### DIPLOMA IN VEHICLE ACCIDENT REPAIR AND BODY PRINCIPLES

LEVEL 2 1 YEAR

This course focuses on how vehicles are constructed and the materials which are used. You'll learn techniques such as MAG welding and fillers to repair or restore damaged vehicle panelling and bodywork.

**Entry Requirements:** There are no formal entry requirements, however, learners are strongly advised to have completed a relevant Level 1 qualification.

### DIPLOMA IN VEHICLE ACCIDENT REPAIR AND PAINT PRINCIPLES

LEVEL 3 1 YEAR

This course is designed to enhance your skills in the vehicle paint repair industry. You'll learn how to paint match, and apply topcoats and you'll have the opportunity to practice your skills in our cutting-edge spray booths.

**Entry Requirements:** There are no formal entry requirements, however, learners are strongly advised to have completed a relevant Level 2 qualification.

### DIPLOMA IN VEHICLE ACCIDENT REPAIR BODY PRINCIPLES

LEVEL 3 1 YEAR

This course will build on the skills you learnt at Level 2. You'll focus on welding techniques, structural panel repair and major accident repair/replacement.

**Entry Requirements:** There are no formal entry requirements, however, learners are strongly advised to have completed a relevant Level 2 qualification.

## APPRENTICESHIPS

### VEHICLE DAMAGE PAINT TECHNICIAN

LEVEL 3 39 MONTHS

A vehicle damage paint technician prepares, sprays and finishes vehicles which have been involved in collisions or other incidents. You'll learn a range of paint application techniques to repair vehicles.

**Entry Requirements:** Candidates must hold a minimum of a Level 1 qualification in English and maths. Candidates without a Level 2 qualification in English and maths must be willing to achieve these before they complete their apprenticeship.\*

\*Please note: Students without English and maths will be expected to take these alongside their apprenticeship. Employers may also set their own entry requirements in addition to the ones outlined above.

“

## MIKE MASSEY

*Level 3 Vehicle Accident Repair and Refinishing*

”

“I never imagined my qualification would have taken me this far so quickly. The opportunities that I have been given have definitely helped me to fast track my career. The tutors at college couldn't do enough to help me excel. They've provided hands-on help and even supported me in the evenings outside of college hours. It's this support from my tutors that makes me passionate about training others. Learning on the job was the best way for me to develop the skills I needed.

I also had the opportunity to compete in the WorldSkills UK competition when I was a student and actually ended up winning gold at the national final, an achievement that I'm very proud of. The auto industry watches the Worldskills UK competition with interest to spot new talent, and I have met many interesting people through being part of this as a competitor, a mentor to other competitors and as a judge. It is a fantastic initiative and I am grateful I have had the chance to be part of it.

I'm now working for 3M as an Application Engineer. I'm still only young but I think I get respect from others because they can see I have experience working on the shop floor. I am positive about the future and I know the experiences I have had so far will help me to develop an exciting career in the auto industry.”



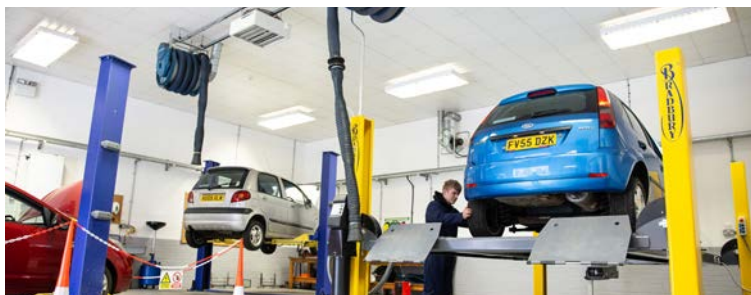
54% of  
vehicle paint  
technicians have a  
Level 3 qualification



# VEHICLE TECHNOLOGY

All of our courses have been designed to give you the skills needed for a career in vehicle technology. Each course focuses on practical skills and development and you'll get to work at our Lockoford Lane campus which has purpose-built fully-equipped workshops. Guest speakers from across the industry will also help you to develop specialist knowledge in your chosen area.

All of our tutors have years of experience so they can teach you exactly what you need to know to succeed in the industry. We also have close links with local, regional and national employers, who can give you advice about current employment opportunities.



## CAREER IDEAS

VEHICLE SERVICE TECHNICIAN

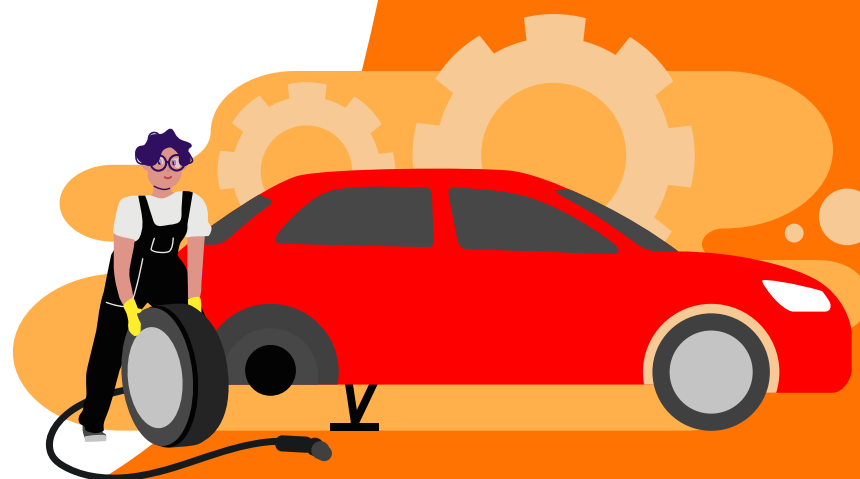
VEHICLE DIAGNOSTIC  
TECHNICIAN

AUTO ELECTRICIAN

BREAKDOWN ENGINEER

GARAGE MANAGER

MOTOR MECHANIC



APPLY NOW

FOR MORE COURSE INFORMATION AND CAREER PATHWAYS VISIT:  
[WWW.CHESTERFIELD.AC.UK/AUTOMOTIVE-COURSE](http://WWW.CHESTERFIELD.AC.UK/AUTOMOTIVE-COURSE)



# COLLEGE COURSES

£26,374  
AVERAGE SALARY  
FOR VEHICLE TECHS  
AND MECHANICS

VEHICLE  
TECHNOLOGY

## DIPLOMA IN VEHICLE SYSTEMS MAINTENANCE

ENTRY LEVEL 3 1 YEAR

This course will introduce you to the motor vehicle industry. You'll learn transferable skills and the basic vehicle maintenance knowledge you'll need to progress onto the Level 1 Diploma in Vehicle Systems Maintenance.

**Entry Requirements:** There are no formal entry requirements.

## DIPLOMA IN VEHICLE SYSTEMS MAINTENANCE

LEVEL 1 1 YEAR

This course is a great starting point if you enjoy working on cars and other light vehicles. During the course you'll study vehicle maintenance techniques, electrical and electronic systems, fault diagnosis and repair, and air conditioning and climate control systems.

**Entry Requirements:** Three GCSEs at grade 1 or above.

## CERTIFICATE IN LIGHT VEHICLE MAINTENANCE AND REPAIR PRINCIPLES

LEVEL 2 1 YEAR

If you want a career maintaining or repairing vehicles, including fitting and replacing tyres, working on hybrid vehicles or even having your own car valeting business, then this course is for you. During the course you will build and develop your existing skills.

**Entry Requirements:** A relevant Level 1 qualification or industry experience.

## DIPLOMA IN LIGHT VEHICLE MAINTENANCE AND REPAIR PRINCIPLES

LEVEL 2 1 YEAR

This course is ideal for those who are progressing from the Level 2 Certificate course or those who have some experience working in the industry. The course is both theory and practical based, you'll study maintenance techniques, exhaust fitting, engine and transmission maintenance and electronic systems operation.

**Entry Requirements:** A relevant Level 1 qualification or industry experience.

## DIPLOMA IN LIGHT VEHICLE MAINTENANCE AND REPAIR PRINCIPLES

LEVEL 3 1 YEAR

This course will build on your existing skills and provide you with the knowledge you need to enter employment. You'll study repair techniques on all vehicle systems, fault diagnosis using electrical systems and learn how to carry out routine safety checks.

**Entry Requirements:** A relevant Level 2 qualification or industry experience.

# APPRENTICESHIPS

## AUTOCARE TECHNICIAN

LEVEL 2 27 MONTHS

As an autocare technician you'll carry out repairs and services to cars and other light goods vehicles. You'll get to grips with tyre legislation, steering and suspension, breaking systems, batteries and exhaust systems.

**Entry Requirements:** Candidates must hold a minimum of an Entry-Level 3 qualification in English and maths. Candidates without a Level 1 qualification in English and maths must be willing to achieve these and take the test for Level 2 before they complete their apprenticeship.\*

\*Please note: Students without English and maths will be expected to take these alongside their apprenticeship. Employers may also set their own entry requirements in addition to the ones outlined above.

“

## BRYONY SIDDALL

*Level 3 Diploma in Light Vehicle  
Maintenance and Repair Principles*

”

“I love anything mechanical but I never had the chance to develop these skills at school. As soon as I came to college I knew it was the right place for me. Everyone was welcoming and it was completely opposite to the other experiences I’ve had before. The tutors made me think I could actually do this. I knew nothing about cars when I arrived but now I am really proud of the fact that I am getting distinctions and helping other students on the course too. The study programme has helped me with my maths as well. I used to tremble at the thought of anything mathematical but now I am working out equations and things I never thought I’d be able to do.

This study programme has given me the opportunity to apply maths in a practical way and prove that I can do it. Instead of just shutting off when I don’t understand something I have learnt methods which help me get to the right answer.

Coming to college has given me choices; I can use the skills I have learnt in so many ways. Eventually I think I want to go to university and maybe onto teaching after that.”



1,255 MECHANICS  
ARE EMPLOYED  
IN THE  
CHESTERFIELD  
REGION

*apply now*

[www.chesterfield.ac.uk](http://www.chesterfield.ac.uk)

01246 500 500